

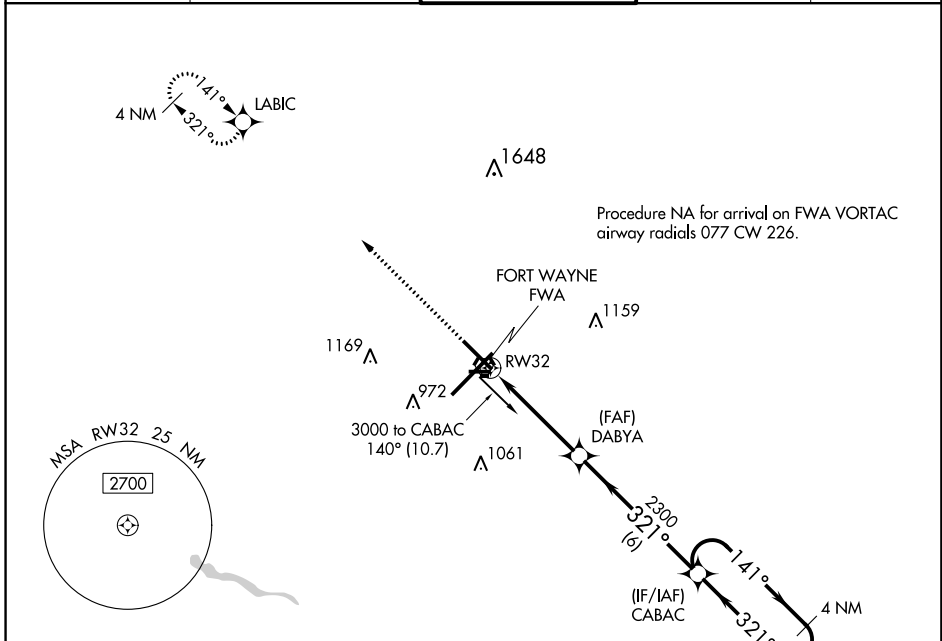
WAAS CH <b>82417</b> <b>W32A</b>	APP CRS <b>321°</b>	Rwy Idg TDZE Apt Elev	<b>8001</b> <b>800</b> <b>815</b>
--	------------------------	-----------------------------	---

# RNAV (GPS) RWY 32

FORT WAYNE INTL (FWA)

<p>▲ For uncompensated Baro-VNAV systems, LNAV/VNAV NA below -16°C (4°F) or above 47°C (116°F). DME/DME RNP-0.3 NA. ** RVR 1800 authorized with use of FD or AP or HUD to DA.</p>	<p>MALSRL AS</p>	<p>MISSED APPROACH: Climb to 3000 direct LABIC and hold.</p>
---	----------------------	--

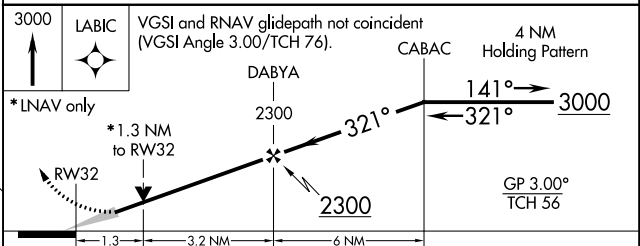
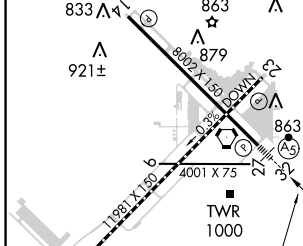
ATIS <b>121.25 360.825</b>	FORT WAYNE APP CON <b>127.2 284.6</b>	FORT WAYNE TOWER <b>119.1 269.325</b>	GND CON <b>121.9 348.6</b>	CLNC DEL <b>124.75</b>
-------------------------------	--	--	-------------------------------	---------------------------



EC-2, 11 OCT 2018 to 08 NOV 2018

EC-2, 11 OCT 2018 to 08 NOV 2018

ELEV	<b>815</b>	<b>D</b>	TDZE	<b>800</b>
------	------------	----------	------	------------



CATEGORY	A	B	C	D
LPV DA	**1000/24 200 (200-½)			
LNAV/VNAV DA	1250/50 450 (500-1)			
LNAV MDA	1280/24	480 (500-½)	1280/50	480 (500-1)
<b>C</b> CIRCLING	1300-1	485 (500-1)	1420-1¾ 605 (700-1¾)	1520-2¼ 705 (800-2¼)

TDZ/CL Rwy 5  
REIL Rwy 14 and 23  
HIRL Rwy 5-23 and 14-32