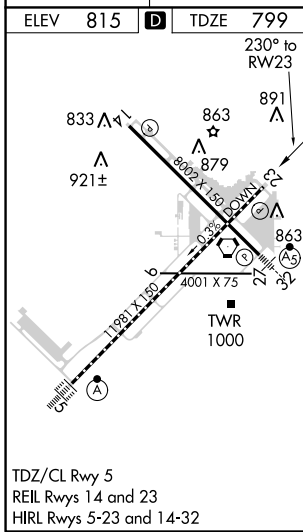
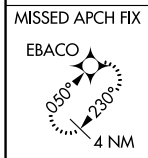
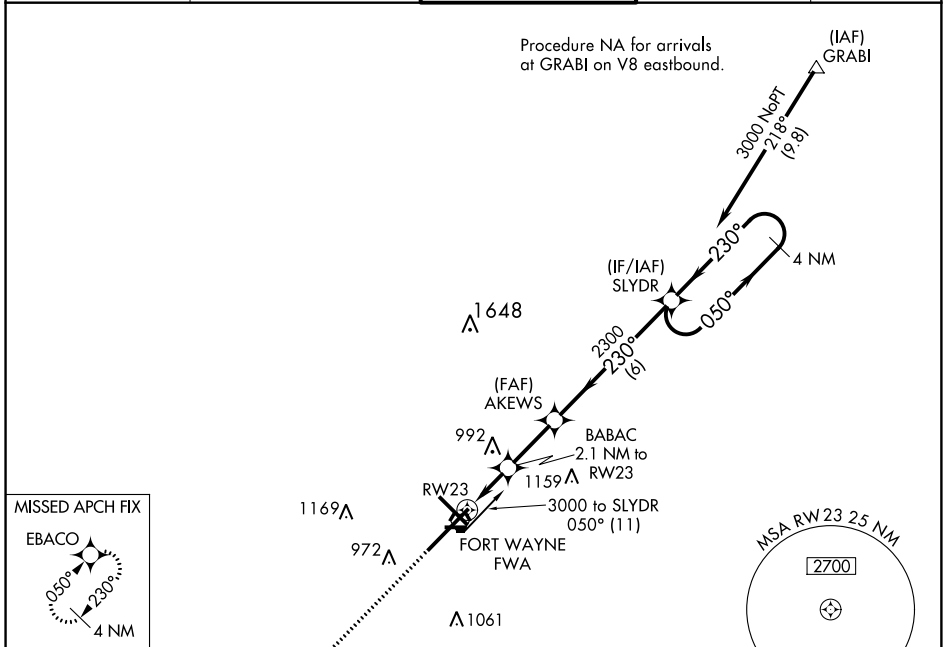


WAAS CH 69599 W23A	APP CRS 230°	Rwy Idg 11981 TDZE 799 Apt Elev 815
--	------------------------	--

RNAV (GPS) RWY 23

FORT WAYNE INTL (FWA)

For uncompensated Baro-VNAV systems, LNAV/VNAV NA below -16°C (4°F) or above 47°C (116°F). DME/DME RNP-0.3 NA. ASR		MISSED APPROACH: Climb to 3000 direct EBACO and hold.		
ATIS 121.25 360.825	FORT WAYNE APP CON 127.2 284.6	FORT WAYNE TOWER 119.1 269.325	GND CON 121.9 348.6	CLNC DEL 124.75



Procedure NA for arrival on FWA VORTAC airway radials 335 CW 134.

3000	EBACO	VGSI and RNAV glidepath not coincident (VGSI Angle 3.00/TCH 76).	4 NM Holding Pattern		
*LNAV only.	BABAC 2.1 NM to RW23	AKIEWS 2300	SLYDR		
*1.3 NM to RW23	*1520	2300	3000		
1.3	0.8	2.4 NM	6 NM		
050°	230°	230°	3000		
GP 3.00° TCH 55					
CATEGORY	A	B	C	D	E
LPV DA	1053/40		254 (300-¾)		
LNAV/VNAV DA	1230-1⅜		431 (500-1⅜)		
LNAV MDA	1300/55		501 (500-1¼)		
C CIRCLING	1300-1 485 (500-1)		1420-1¾ 605 (700-1¾)	1520-2¼ 705 (800-2¼)	1520-2½ 705 (800-2½)

EC-2, 11 OCT 2018 to 08 NOV 2018

EC-2, 11 OCT 2018 to 08 NOV 2018