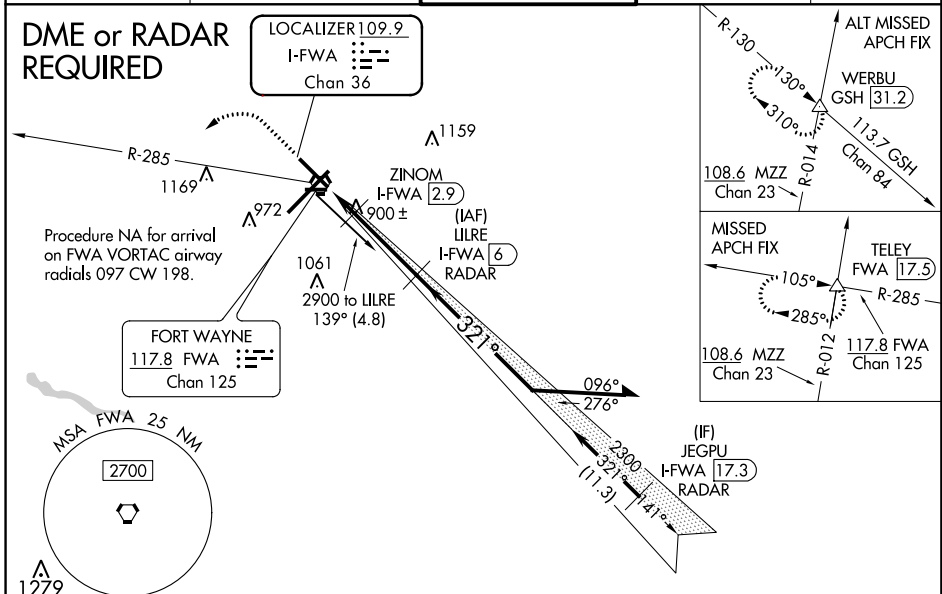


LOC/DME I-FWA 109.9 Chan 36	APP CRS 321°	Rwy Idg TDZE Apt Elev	8001 800 815
------------------------------------------	------------------------	-----------------------------	-----------------------------------------

ILS or LOC RWY 32

FORT WAYNE INTL (FWA)

DME required for LOC only. DME or RADAR required for procedure entry.		MALSR 	MISSED APPROACH: Climb to 3000 then left turn on FWA VORTAC R-285 to TELEY INT/FWA 17.5 DME and hold.	
For inop ALS, increase S-ILS 32 Cat E visibility to RVR 4000, S-LOC 32 Cat E visibility to RVR 6000. Use I-FWA DME when on the localizer course. # RVR 1800 authorized with use of FD or AP or HUD to DA.				
ATIS 121.25 360.825	FORT WAYNE APP CON 127.2 284.6	FORT WAYNE TOWER 119.1 269.325	GND CON 121.9 348.6	CLNC DEL 124.75



EC-2. 11 OCT 2018 to 08 NOV 2018

EC-2. 11 OCT 2018 to 08 NOV 2018

ELEV 815	D	TDZE 800					
<p>833 921± 863 879 891</p> <p>8002.1 150 150</p> <p>8001.1 150 150</p> <p>4001 X 75</p> <p>TWR 1000</p> <p>321° 4.6 NM from FAF</p> <p>TDZ/CL Rwy 5</p> <p>REIL Rwys 14 and 23</p> <p>HIRL Rwys 5-23 and 14-32</p> <p>FAF to MAP 4.6 NM</p> <p>Knots 60 90 120 150 180</p> <p>Min:Sec 4:36 3:04 2:18 1:50 1:32</p>							
C CIRCLING	1300-1	485 (500-1)	1420-1¾	1520-2¼	1520-2½	705 (800-2¼)	705 (800-2½)

Cat E Procedure Turn NA.

3000 FWA R-285 TELEY

*LOC only

ZINOM I-FWA 2.9

LILRE I-FWA 6 RADAR

2300 141° 321° 2400

*1280 2300

1.4 NM 3.2 NM

VGSI and ILS glidepath not coincident (VGSI Angle 3.00/TCH 76). Remain within 10 NM

GS 3.00° TCH 56

CATEGORY	A	B	C	D	E
S-ILS 32	# 1000/24 200 (200-½)				
S-LOC 32	1160/24	360 (400-½)	1160/40 360 (400-¾)		