

CLEVELAND HOPKINS D-ATIS
127.85
BURKE LAKEFRONT ATIS
125.25
CLEVELAND APP CON
124.0 354.025

WILLOUGHBY
LOST NATION
MUNI

Ldg KBKL, KCGF, KLINN

TOONZ
6000

BUDRW
6000 240K

BURKE
LAKEFRONT

CLVTO
10000
8000

CLEVELAND -
HOPKINS INTL

JAAIN
7000 210K

HARDR
6000 210K

NAGGY

KCLE Ldg Rwy 28

TRYBE
FL190
10000

HFNER
16000 280K

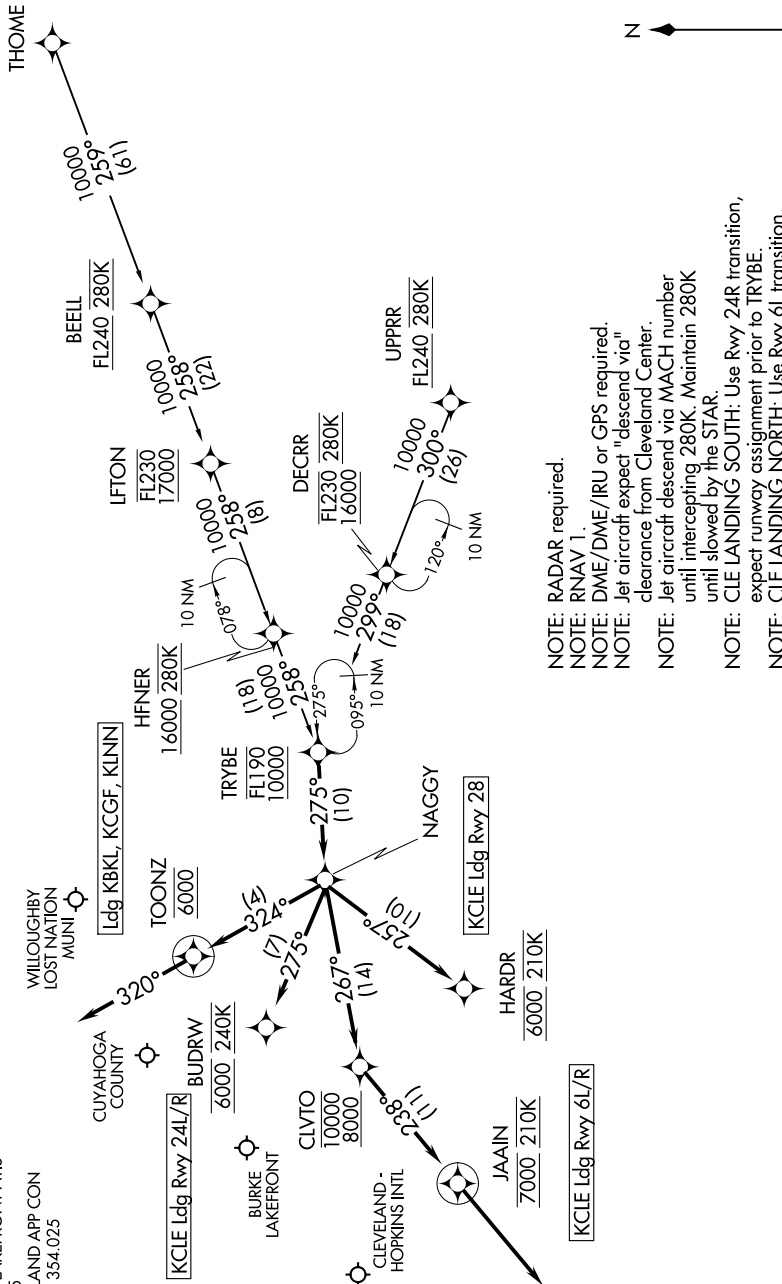
LFTON
FL230
17000

DECRR
FL230 280K
16000

UPPRR
FL240 280K

BEELL
FL240 280K

THOME



- NOTE: RADAR required.
- NOTE: RNAV 1.
- NOTE: DME/DME/IRU or GPS required.
- NOTE: Jet aircraft expect "descend via" clearance from Cleveland Center.
- NOTE: Jet aircraft descend via MACH number until intercepting 280K. Maintain 280K until slowed by the STAR.
- NOTE: CLE LANDING SOUTH: Use Rwy 24R transition, expect runway assignment prior to TRYBE.
- NOTE: CLE LANDING NORTH: Use Rwy 6L transition, expect runway assignment prior to TRYBE.

(NARRATIVE ON FOLLOWING PAGE)

NOTE: Chart not to scale.