

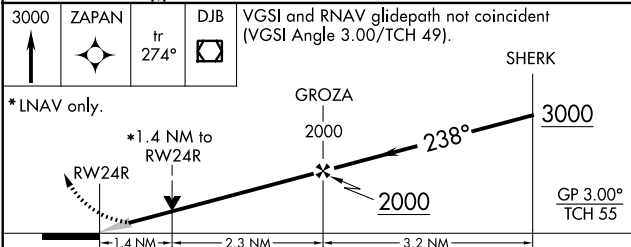
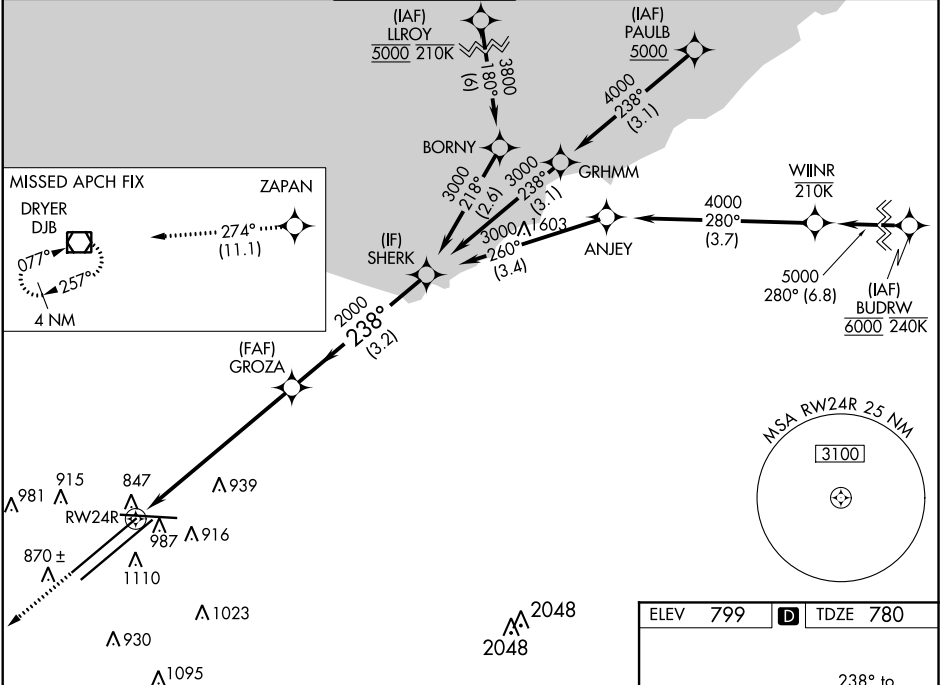
RNAV (GPS) Y RWY 24R

CLEVELAND-HOPKINS INTL (CLE)

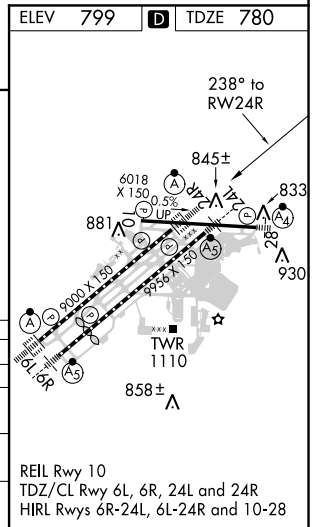
WAAS CH 60904 W24A	APP CRS 238°	Rwy Idg TDZE 780 Apt Elev 799	9000
--	------------------------	---	-------------

RNP APCH.	ALSF-2	MISSED APPROACH: Climb to 3000 direct ZAPAN and on track 274° to DJB VOR/DME and hold.
<p>For uncompensated Baro-VNAV systems, LNAV/VNAV NA below -18°C (0°F) or above 54°C (130°F). Circling Rwy 10 NA at night. For inop ALS, increase LNAV Cats C/D visibility to 1 3/8 SM.</p>		

D-ATIS ARR 127.85 DEP 132.375	CLEVELAND APP CON 124.0 354.025	CLEVELAND TOWER 124.5 273.45	GND CON 121.7 273.45	CLNC DEL 125.05 273.45	CPDLC
---	---	--	--------------------------------	----------------------------------	-------



CATEGORY	A	B	C	D
LPV DA	980/18		200 (200-1/2)	
LNAV/VNAV DA	1168/35		388 (400-3/4)	
LNAV MDA	1260/24	480 (500-1/2)	1260/50	480 (500-1)
CIRCLING	1420-1 621 (700-1)		1420-1 3/4 621 (700-1 3/4)	1420-2 621 (700-2)



EC-2, 11 OCT 2018 to 08 NOV 2018

EC-2, 11 OCT 2018 to 08 NOV 2018

REIL Rwy 10
TDZ/CL Rwy 6L, 6R, 24L and 24R
HIRL Rwy 6R-24L, 6L-24R and 10-28