

LOC/DME F-LVK 110.5 Chan 42	APP CRS 255°	Rwy ldg TDZE 400 Apt Elev 400	5253
---	------------------------	---	-------------

LOC RWY 25R

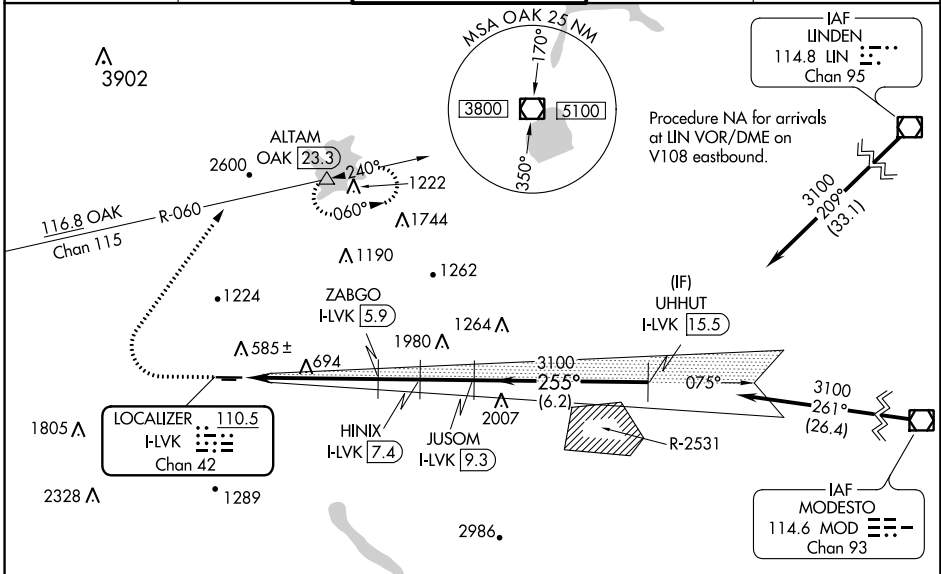
LIVERMORE MUNI (LVK)

⚠ Circling to Rwy 25L NA at night.
Inop table does not apply to S-25R Cats C/D.
Circling NA north of Rwy 7L-25R.
DME required.

MALSR
A5

MISSED APPROACH: Climb to 2000 then climbing right turn to 5000 on heading 020° and OAK VOR/DME R-060 to ALTAM/OAK VOR/DME 23.3 DME and hold, continue climb-in-hold to 5000.
*Missed approach requires minimum climb of 235 feet per NM to 3600.

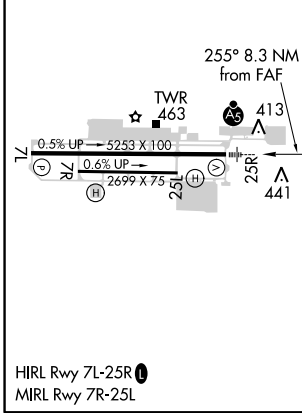
ATIS 119.65	NORCAL APP CON 123.85 278.3	LIVERMORE TOWER * 118.1 (CTAF) 239.25	GND CON 121.6	UNICOM 122.95
-----------------------	---------------------------------------	--	-------------------------	-------------------------



SW-2, 13 SEP 2018 to 11 OCT 2018

SW-2, 13 SEP 2018 to 11 OCT 2018

ELEV 400	TDZE 400
----------	----------



CATEGORY	A	B	C	D
S-LOC 25R*	1080-1/2	680 (700-1/2)	1080-1/2	680 (700-1/2)
S-LOC 25R	2000-3/4 1600 (1600-3/4)	2000-1 1600 (1600-1)	2000-3	1600 (1600-3)
C CIRCLING	2000-1/4 1600 (1600-1/4)	2000-1/2 1600 (1600-1/2)	2000-3	1600 (1600-3)