

APP CRS	Rwy Idg	<b>5158</b>
<b>036°</b>	TDZE	<b>700</b>
	Apt Elev	<b>716</b>

# RNAV (GPS) RWY 4

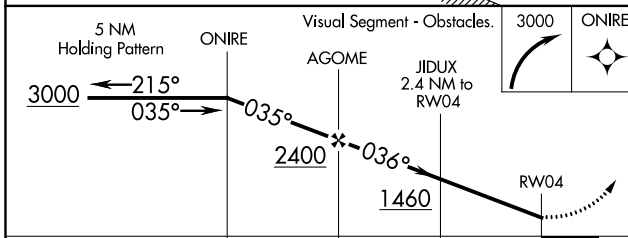
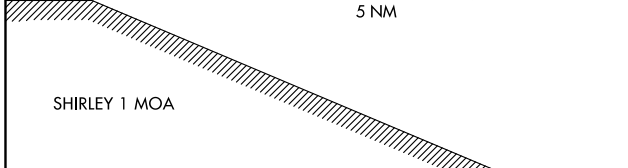
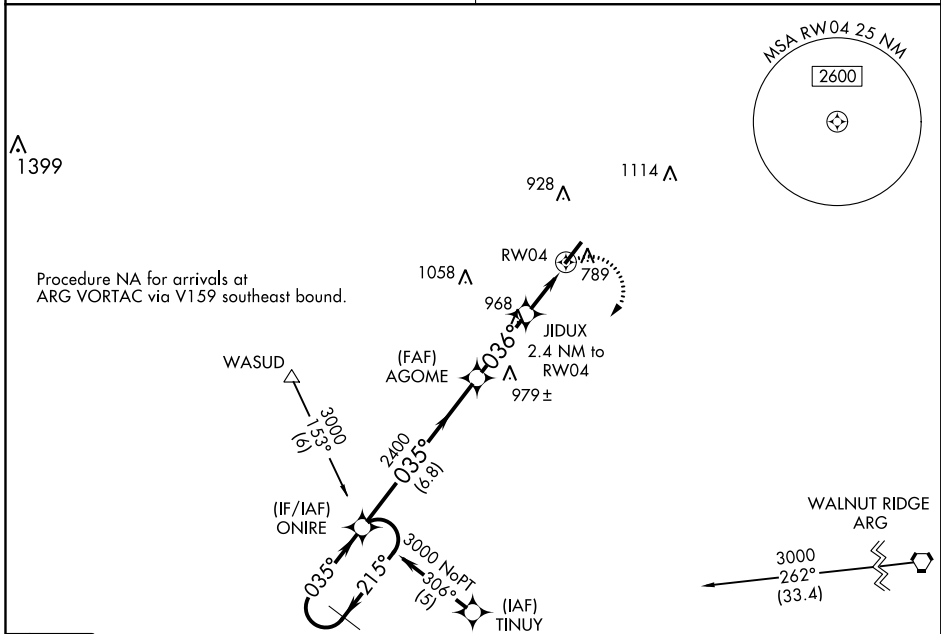
SHARP COUNTY RGNL (CVK)

**NA** DME/DME RNP-0.3 NA. Use Walnut Ridge altimeter setting; if not received, use Jonesboro altimeter setting and increase all MDAs 60 feet. Helicopter visibility reduction below 3/4 SM NA.

**MISSED APPROACH:** Climbing right turn to 3000 direct ONIRE and hold.

MEMPHIS CENTER  
**120.075 289.4**

UNICOM  
**122.7 (CTAF) 0**



CATEGORY	A	B	C	D
LNVA MDA	1260-1	560 (600-1)	1260-1½ 560 (600-1½)	NA
CIRCLING	1400-1	684 (700-1)	1400-2 684 (700-2)	NA

