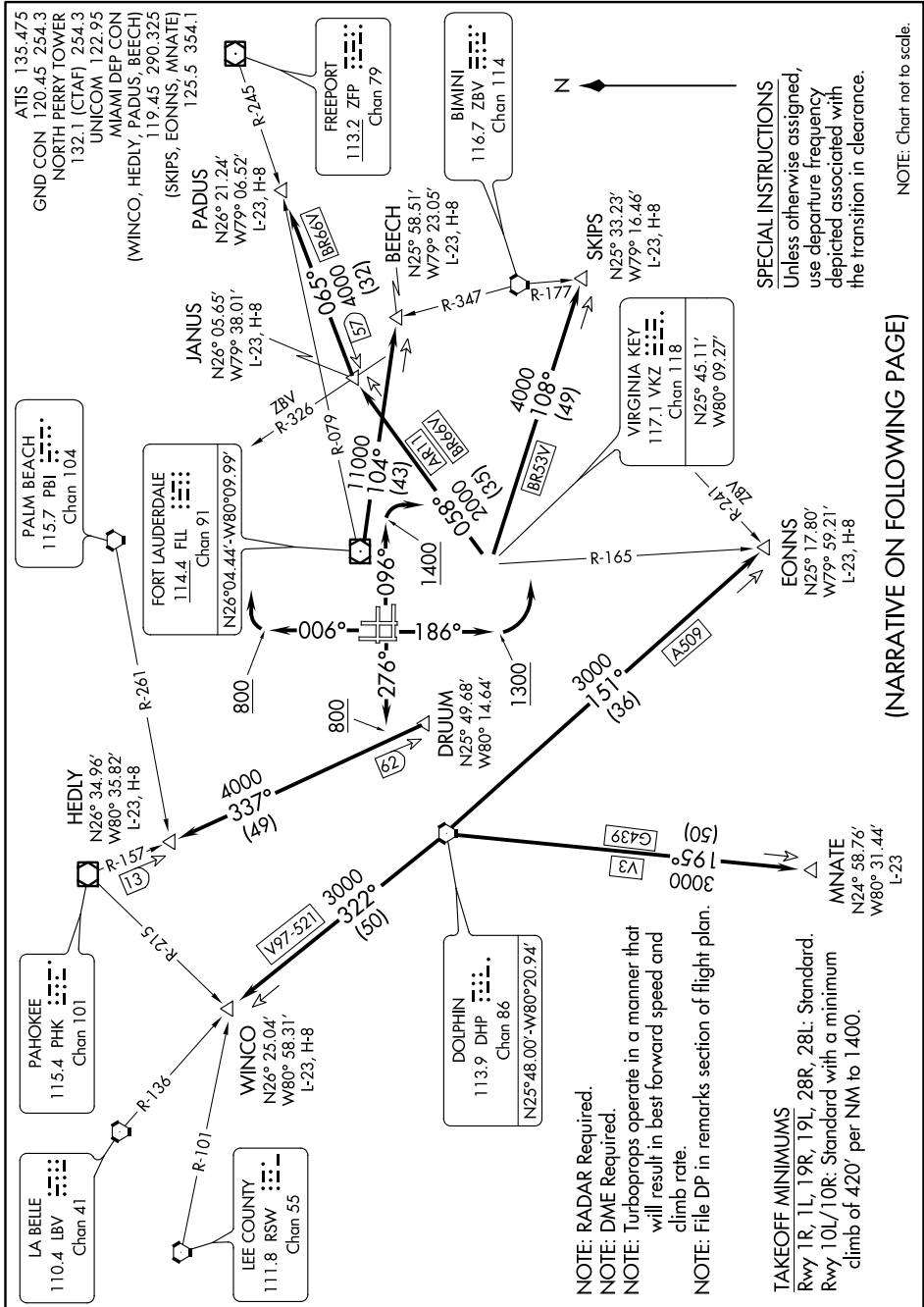


MIAMI SIX DEPARTURE

SE-3, 13 SEP 2018 to 11 OCT 2018



NOTE: Chart not to scale.

SPECIAL INSTRUCTIONS
Unless otherwise assigned, use departure frequency depicted associated with the transition in clearance.

(NARRATIVE ON FOLLOWING PAGE)

NOTE: RADAR Required.
NOTE: DME Required.
NOTE: Turboprops operate in a manner that will result in best forward speed and climb rate.
NOTE: File DP in remarks section of flight plan.

TAKEOFF MINIMUMS
Rwy 1R, 1L, 19R, 19L, 28R, 28L: Standard.
Rwy 10L/10R: Standard with a minimum climb of 420' per NM to 1400.

SE-3, 13 SEP 2018 to 11 OCT 2018