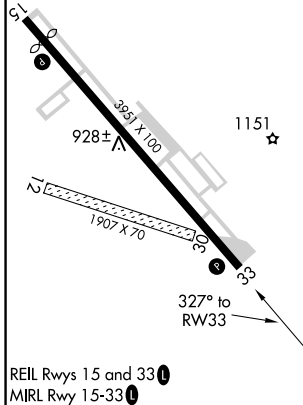
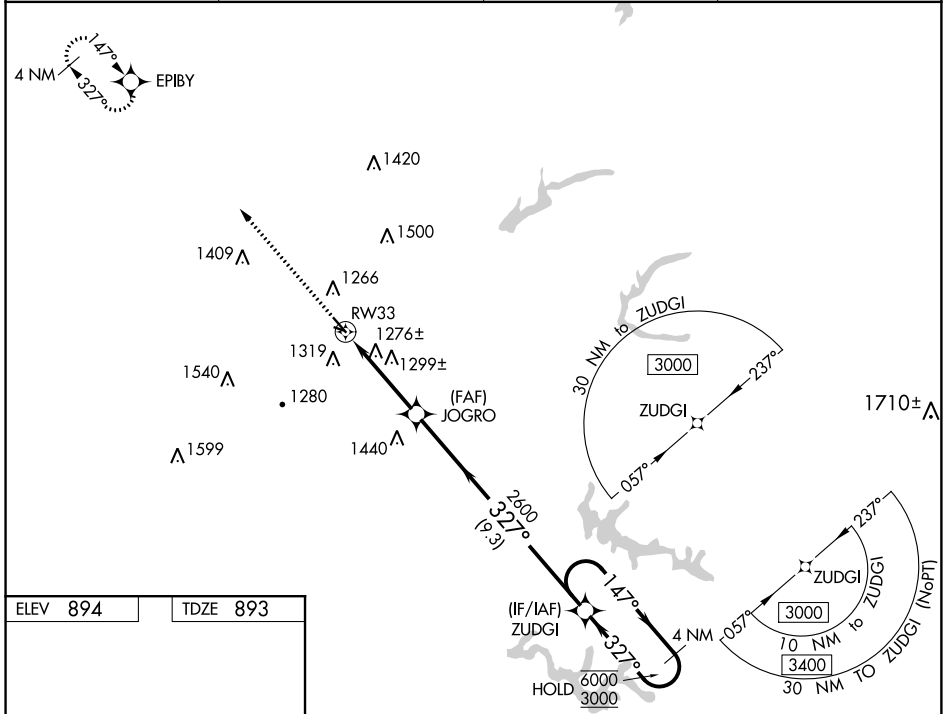


WAAS CH <b>70343</b> <b>W33A</b>	APP CRS <b>327°</b>	Rwy Idg TDZE <b>893</b> Apt Elev <b>894</b>	<b>3951</b>
--	------------------------	---	-------------

# RNAV (GPS) RWY 33

HARRY CLEVER FIELD (PHD)

RNP APCH.		MISSED APPROACH: Climb to 3000 direct EPIBY and hold.	
<p>▼</p> <p>Circling NA to Rwy 12 and 30. Rwy 33 helicopter visibility reduction below 1 SM NA. Procedure NA at night.</p>			
ASOS <b>121.425</b>	AKRON-CANTON APP CON* <b>125.5 371.875</b>	UNICOM <b>122.8 (CTAF)</b>	<b>123.3</b>



3000	EPIBY	4 NM Holding Pattern	
		JOGRO	ZUDGI
RWY 33 4.00° TCH 54 3.9 NM 2600 9.3 NM		147° → 6000	← 327° 3000
CATEGORY	A	B	C D
LP MDA	1540-1	647 (700-1)	NA
LNAV MDA	1560-1	667 (700-1)	NA
CIRCLING	1620-1 726 (800-1)	1640-1 746 (800-1)	NA

EC-2, 13 SEP 2018 to 11 OCT 2018

EC-2, 13 SEP 2018 to 11 OCT 2018