

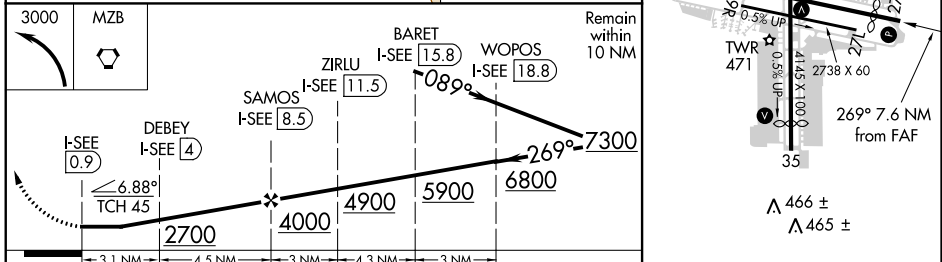
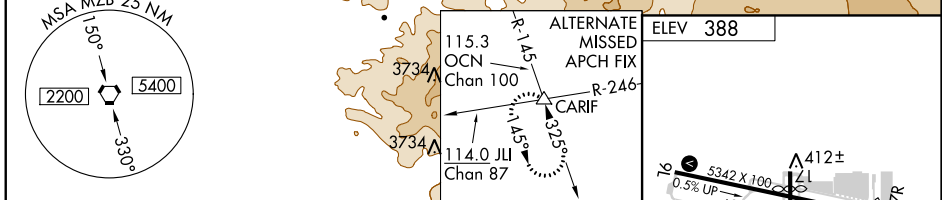
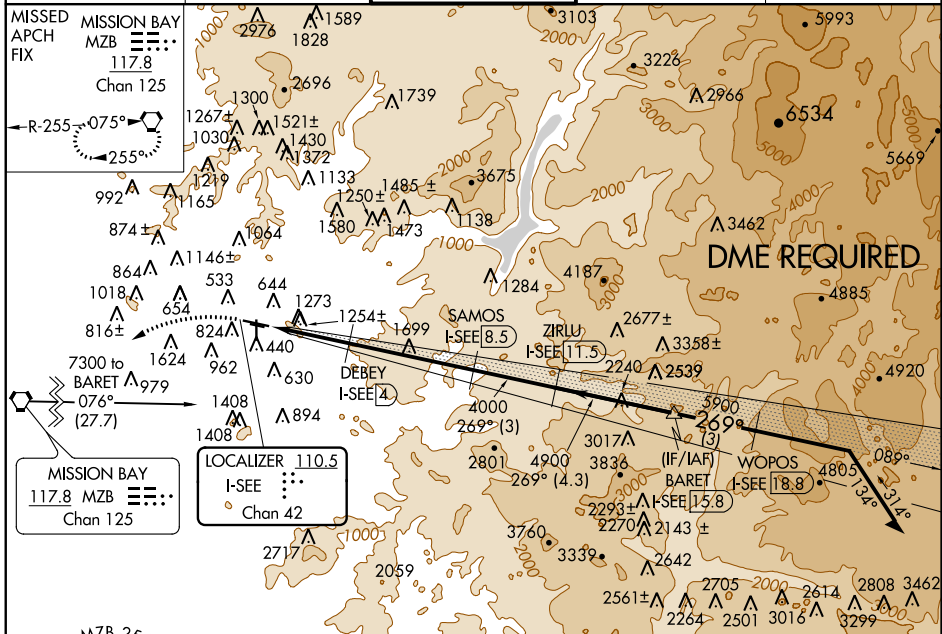
LOC/DME I-SEE 110.5 Chan 42	APP CRS 269°	Rwy Idg TDZE Apt Elev	N/A N/A 388
---	------------------------	-----------------------------	--

LOC-D
GILLESPIE FIELD (SE/E)

⚠ When local altimeter setting not received, use Miramar MCAS altimeter setting and increase all MDA 40 feet. Helicopter visibility reduction below 1 SM NA. Circling NA NE of Rwy 27R-17. Night Landing: Rwy 9L, 17, 27L, 27R, 35 NA.

⚠ MISSED APPROACH: Climbing left turn to 3000 direct to MZB VORTAC and hold.

ATIS 125.45	SOCAL APP CON 124.35 279.625	GILLESPIE TOWER* 120.7 (CTAF) 257.8	GND CON 121.7	CLNC DEL 125.1
-----------------------	--	--	-------------------------	--------------------------



CATEGORY	A	B	C	D
CIRCLING	1500-1¼ 1112 (1200-1¼)	1500-1½ 1112 (1200-1½)	1920-3	1532 (1600-3)

MIRL Rwy 9L-27R and 17-35 **⚠**
REIL Rwy 27R **⚠**

SW-3, 13 SEP 2018 to 11 OCT 2018

SW-3, 13 SEP 2018 to 11 OCT 2018