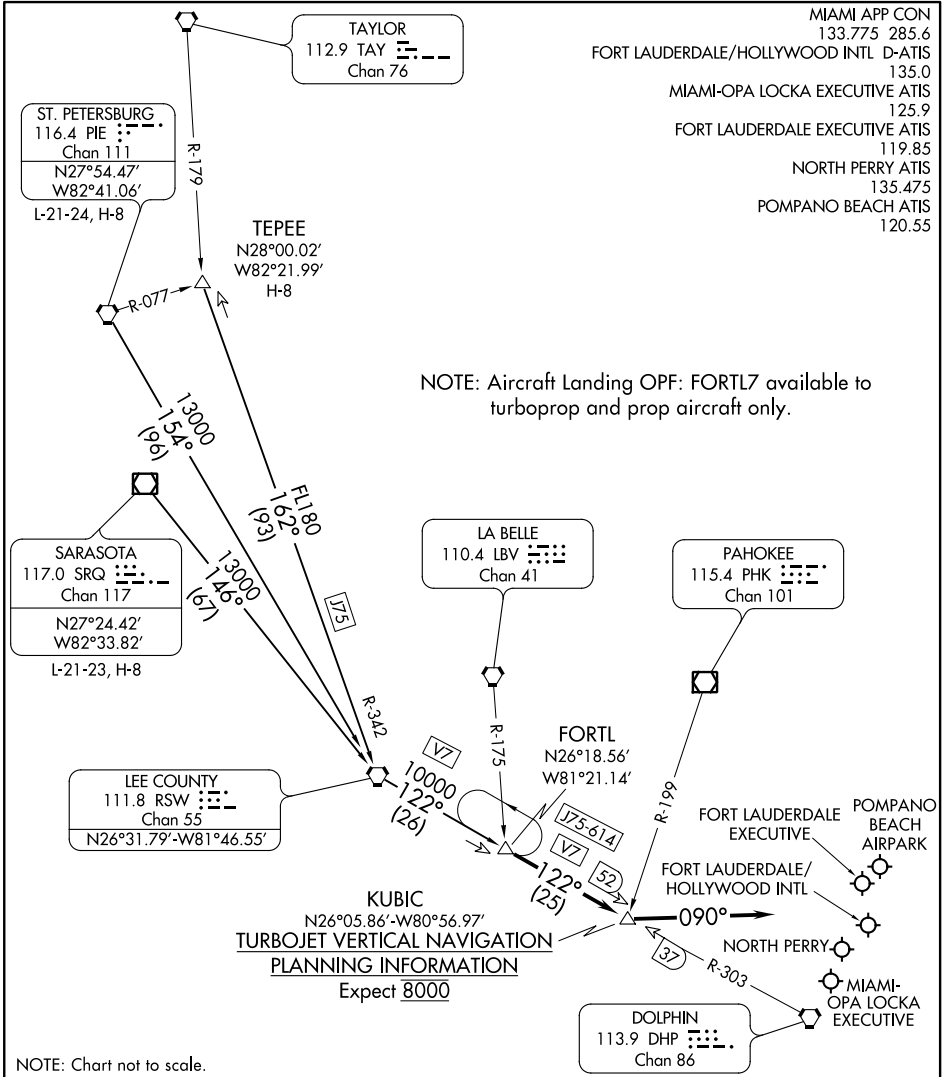


(FORTL.FORTL7) 17173

FORTL SEVEN ARRIVAL

AL-744 (FAA)

FORT LAUDERDALE, FLORIDA



NOTE: Aircraft Landing OPF: FORTL7 available to turboprop and prop aircraft only.

SE-3, 13 SEP 2018 to 11 OCT 2018

SE-3, 13 SEP 2018 to 11 OCT 2018

KUBIC
 N26°05.86'-W80°56.97'
TURBOJET VERTICAL NAVIGATION
PLANNING INFORMATION
 Expect 8000

NOTE: Chart not to scale.

ARRIVAL ROUTE DESCRIPTION

ST. PETERSBURG TRANSITION (PIE.FORTL7): From over PIE VORTAC on PIE R-154 to RSW VORTAC, then on RSW R-122 to FORTL INT. Thence. . . .

SARASOTA TRANSITION (SRQ.FORTL7): From over SRQ VOR/DME on SRQ R-146 to RSW VORTAC, then on RSW R-122 to FORTL INT. Thence. . . .

TEPEE TRANSITION (TEPEE.FORTL7): From over TEPEE INT on J75 and RSW R-342 to RSW VORTAC, then on RSW R-122 to FORTL INT. Thence. . . .

. . . . From over FORTL INT on RSW R-122 to KUBIC INT, then heading 090°. Expect RADAR vectors to final approach course.

FORTL SEVEN ARRIVAL

(FORTL.FORTL7) 22JUN17

FORT LAUDERDALE, FLORIDA