

VORTAC OSH <b>111.8</b> Chan <b>55</b>	APP CRS <b>186°</b>	Rwy Idg <b>8002</b> TDZE <b>794</b> Apt Elev <b>808</b>
--	------------------------	---

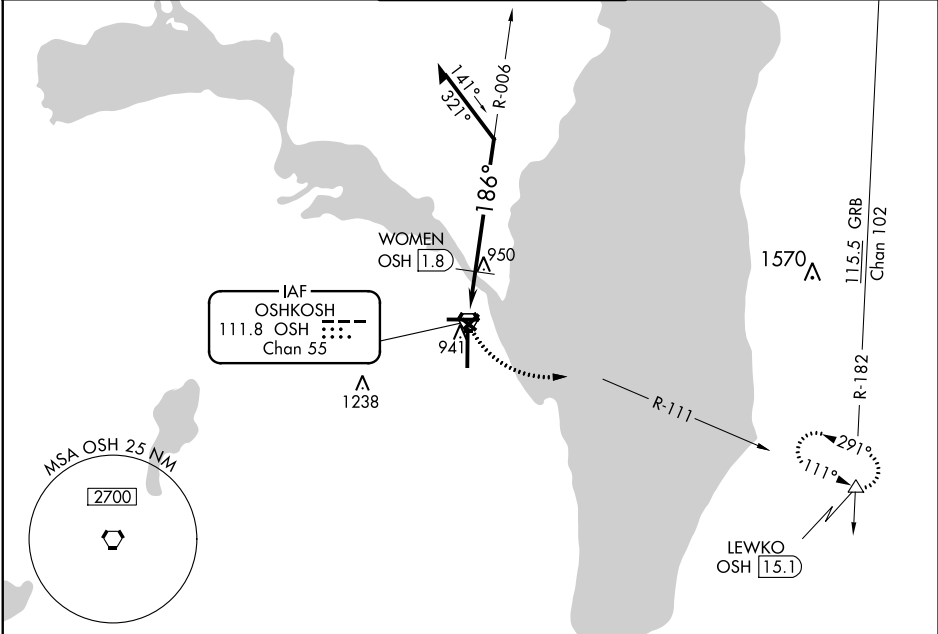
# VOR RWY 18

WITTMAN RGNL (OSH)

**⚠** Circling to Rwy 5, 23, and 31 NA at night. VDP NA with Fond Du Lac County altimeter setting. When local altimeter setting not received, use Fond Du Lac altimeter setting and increase all MDA 40 feet; increase WOMEN fix minimums Circling Cat D visibility ¼ mile. Helicopter visibility reduction below ¾ SM NA.

**MISSED APPROACH:** Climbing left turn to 3000 on OSH VORTAC R-111 to LEWKO INT/OSH 15.1 DME and hold.

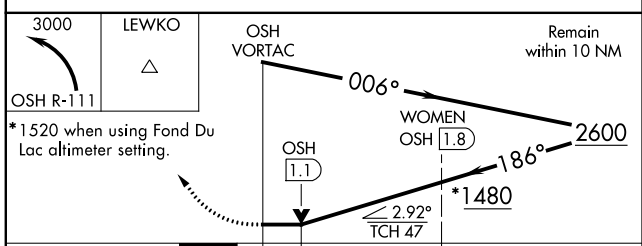
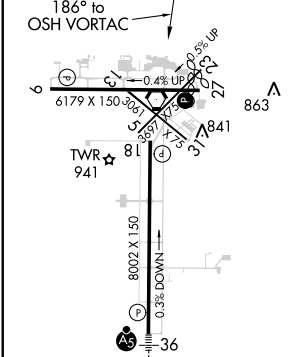
ATIS <b>125.9</b>	MILWAUKEE APP CON <b>127.0 263.075</b>	OSHKOSH TOWER ★ <b>118.5(CTAF) 290.9</b>	GND CON <b>132.3</b>	UNICOM <b>122.95</b>
----------------------	---	---	-------------------------	-------------------------



EC-3, 13 SEP 2018 to 11 OCT 2018

EC-3, 13 SEP 2018 to 11 OCT 2018

ELEV <b>808</b>	TDZE <b>794</b>
-----------------	-----------------



CATEGORY	A	B	C	D
S-18	1480-1	686 (700-1)	1480-2	686 (700-2)
<b>C</b> CIRCLING	1480-1	672 (700-1)	1480-2	1480-2 ¼ 672 (700-2 ¼)
<b>WOMEN FIX MINIMUMS</b>				
S-18	1260-1	466 (500-1)	1260-1 ⅔	466 (500-1 ⅔)
<b>C</b> CIRCLING	1280-1 472 (500-1)	1300-1 492 (500-1)	1360-1 ½ 552 (600-1 ½)	1440-2 632 (700-2)

REIL Rws 18 and 27  
HIRL Rws 9-27 and 18-36