

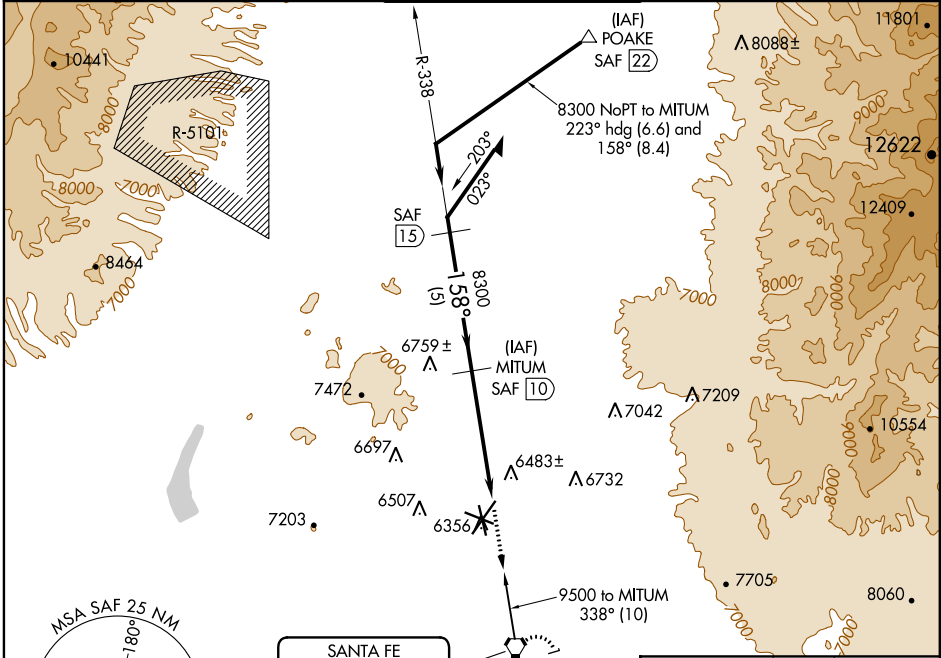
VORTAC SAF <b>110.6</b> Chan 43	APP CRS <b>158°</b>	Rwy Idg TDZE Apt Elev <b>6348</b>	N/A N/A <b>6348</b>
---------------------------------------	------------------------	--------------------------------------	---------------------------

# VOR/DME-A

SANTA FE MUNI (SAF)

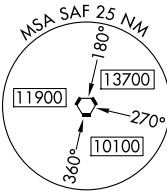
**⚠** When control tower closed, except for operators with approved weather reporting service, use Albuquerque altimeter setting. **MISSED APPROACH:** Climb to 9000 direct SAF VORTAC and hold, continue climb-in-hold to 9000.

ATIS <b>128.55</b>	ALBUQUERQUE CENTER <b>132.8 346.35</b>	SANTA FE TOWER * <b>119.5 (CTAF) 239.3</b>	GND CON <b>121.7</b>	UNICOM <b>122.95</b>
-----------------------	---	---	-------------------------	-------------------------

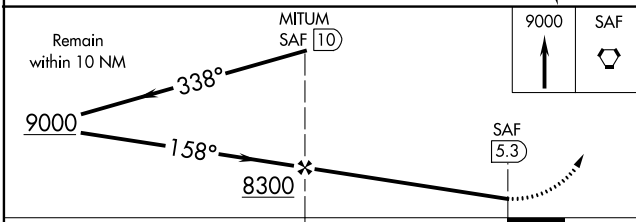
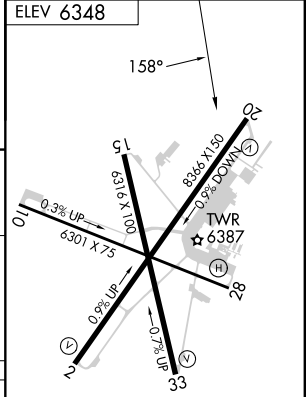


SW-1, 13 SEP 2018 to 11 OCT 2018

SW-1, 13 SEP 2018 to 11 OCT 2018



SANTA FE  
110.6 SAF  
Chan 43



CATEGORY	A	B	C	D
CIRCLING	6960-1	612 (700-1)	6960-1¾ 612 (700-1¾)	7020-2¼ 672 (700-2¼)
ALBUQUERQUE ALTIMETER SETTING MINIMUMS				
CIRCLING	7860-1¼ 1512 (1600-1¼)	7860-1½ 1512 (1600-1½)	7860-3 1512 (1600-3)	7920-3 1572 (1600-3)

REIL Rwy 10, 15, 20 and 33  
MIRL Rwy 2-20 and 15-33 \*  
MIRL Rwy 10-28