

WAAS CH <b>69539</b> <b>W33A</b>	APP CRS <b>339°</b>	Rwy Idg TDZE <b>6316</b> <b>6305</b> Apt Elev <b>6349</b>
--	------------------------	--

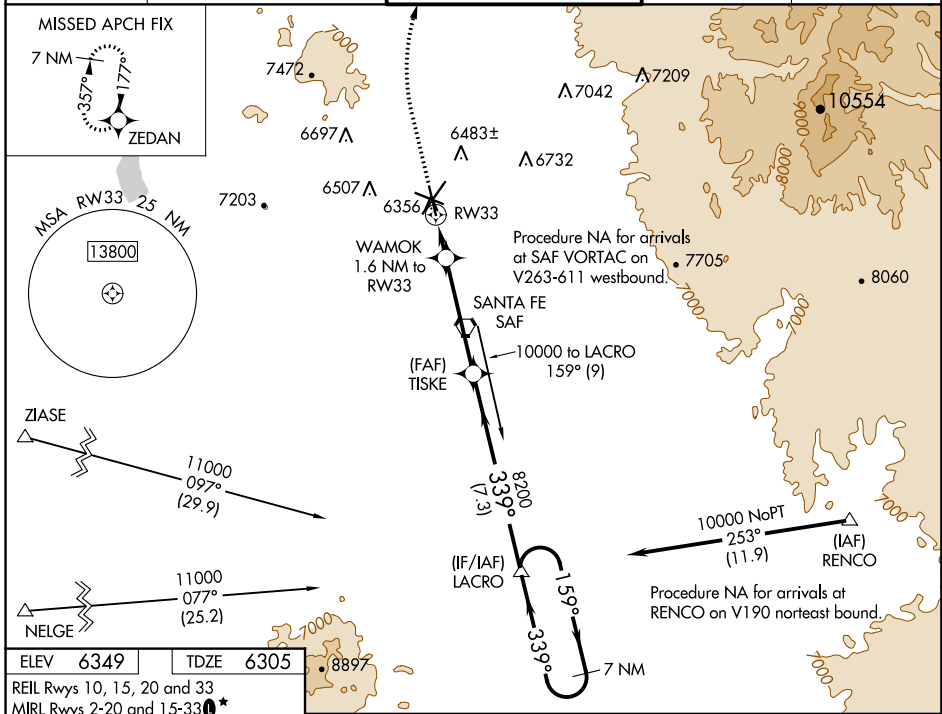
# RNAV (GPS) RWY 33

SANTA FE MUNI (SAF)

**⚠** For uncompensated Baro-VNAV systems, LNAV/VNAV NA below -18°C (0°F) or above 43°C (110°F).  
DME/DME RNP-0.3 NA.

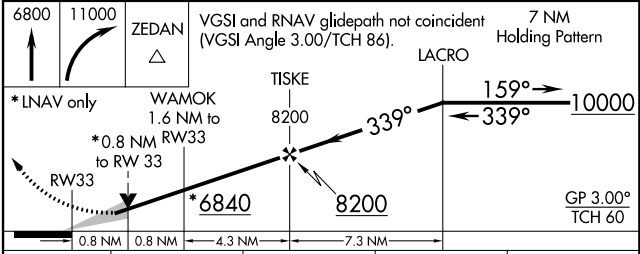
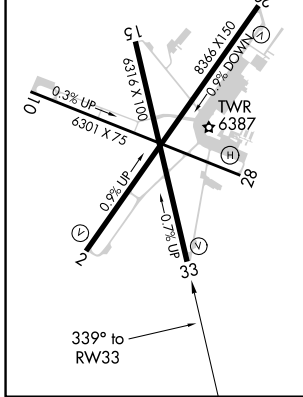
**⚠** MISSED APPROACH: Climb to 6800 then climbing right turn to 11000 direct ZEDAN and hold.

ATIS <b>128.55</b>	ALBUQUERQUE CENTER <b>132.8 346.35</b>	SANTA FE TOWER * <b>119.5 (CTAF) 239.3</b>	GND CON <b>121.7</b>	UNICOM <b>122.95</b>
-----------------------	---	---	-------------------------	-------------------------



ELEV <b>6349</b>	TDZE <b>6305</b>
------------------	------------------

REIL Rwy 10, 15, 20 and 33  
MIRL Rwy 2-20 and 15-33 \*  
MIRL Rwy 10-28



CATEGORY	A	B	C	D
LPV DA		6555-78	250 (300-78)	
LNAV/VNAV DA		6555-78	250 (300-78)	
LNAV MDA	6620-1	315 (300-1)	6620-78	315 (300-78)
<b>C</b> CIRCLING	6800-1 451 (500-1)	6920-1 571 (600-1)	7340-3 991 (1000-3)	7660-3 1311 (1400-3)

SW-1, 13 SEP 2018 to 11 OCT 2018

SW-1, 13 SEP 2018 to 11 OCT 2018