

# AGUDE FIVE ARRIVAL

8101.13 SEP 2018 to 11 OCT 2018

NOTE: Chart not to scale.

NOTE: DME and RADAR required.

MINNEAPOLIS APP CON  
121.2 335.5

ANOKA COUNTY BLAINE (JANES FIELD) ATIS  
120.625

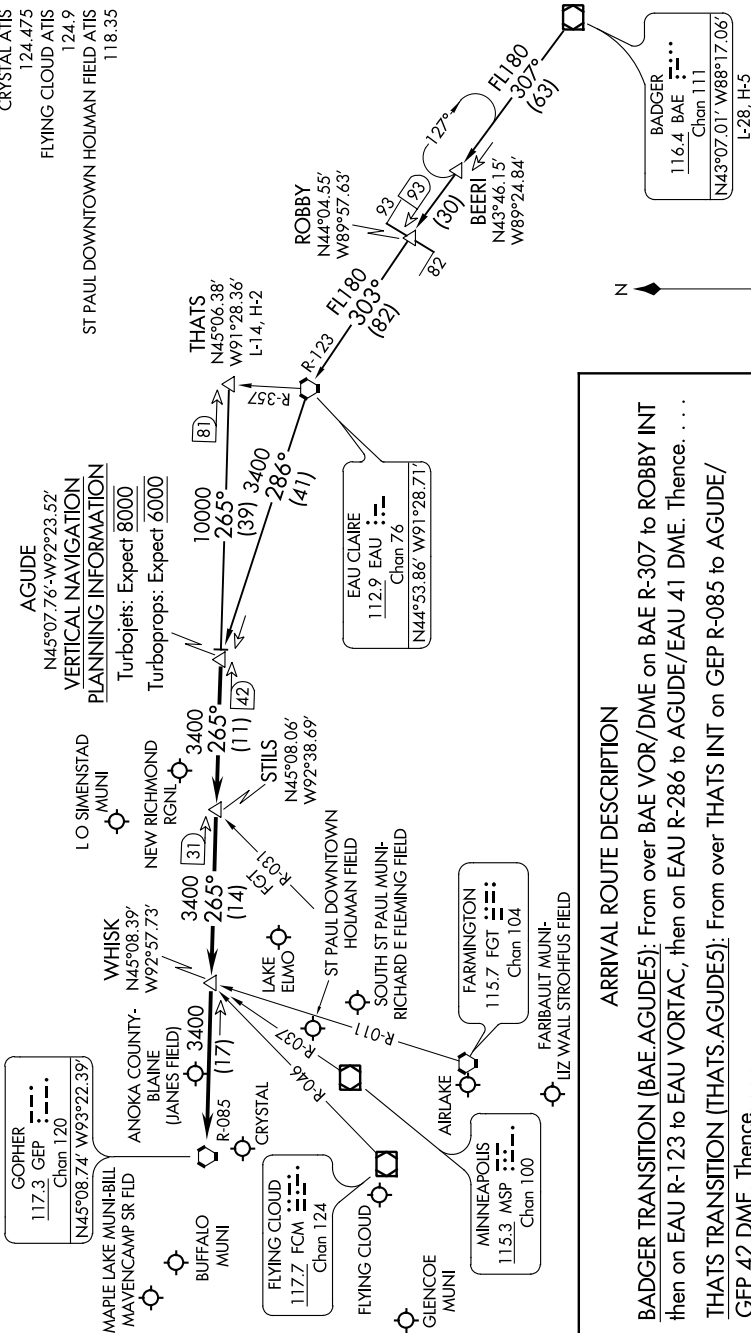
CRYSTAL ATIS  
124.475

FLYING CLOUD ATIS  
124.9

ST PAUL DOWNTOWN HOLMAN FIELD ATIS  
118.35

**AGUDE**  
N45°07.76'-W92°23.52'

**VERTICAL NAVIGATION**  
Turbolojets: Expect 8000  
Turboprops: Expect 6000



## ARRIVAL ROUTE DESCRIPTION

**BADGER TRANSITION (BAE.AGUDE5):** From over BAE VOR/DME on BAE R-307 to ROBBY INT then on EAU R-123 to EAU VORTAC, then on EAU R-286 to AGUDE/EAU 41 DME. Thence. . . .

**THATS TRANSITION (THATS.AGUDE5):** From over THATS INT on GEP R-085 to AGUDE/ GEP 42 DME. Thence. . . .

. . . . From over AGUDE/GEP 42 DME via GEP R-085 to GEP VORTAC, then expect RADAR vectors to final approach course.

NC-1, 13 SEP 2018 to 11 OCT 2018