

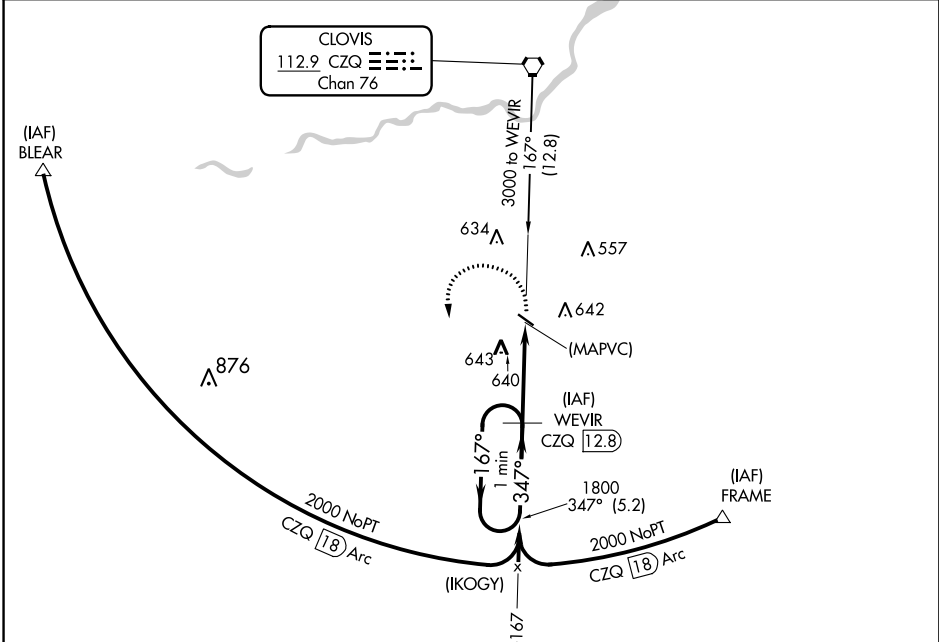
VORTAC CZQ <b>112.9</b> Chan <b>76</b>	APP CRS <b>347°</b>	Rwy Idg TDZE Apt Elev	<b>N/A</b> <b>N/A</b> <b>280</b>
--	------------------------	-----------------------------	--

**VOR/DME or GPS-C**  
FRESNO CHANDLER EXECUTIVE (FCH)

▼ If local altimeter setting not received, use Fresno Yosemite Intl altimeter setting and increase MDA 20 feet.

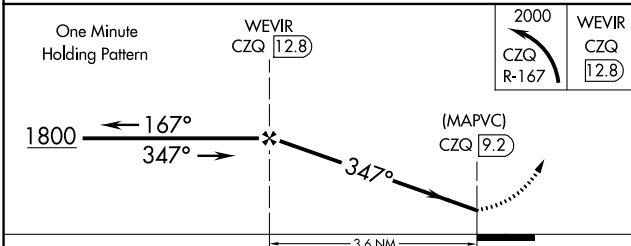
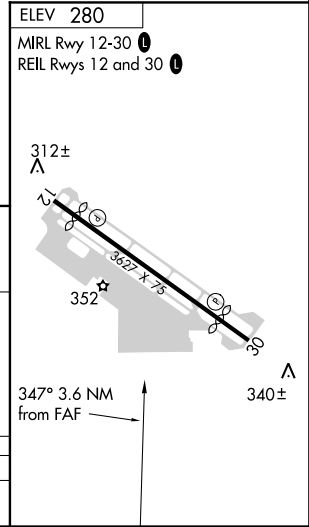
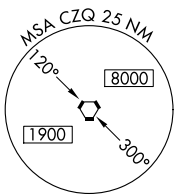
MISSED APPROACH: Climbing left turn to 2000 via R-167 to WEVIR 12.8 DME and hold.

AWOS-3 <b>135.225</b>	FRESNO APP CON <b>119.0 323.25</b>	UNICOM <b>123.0 (CTAF) 0</b>
--------------------------	---------------------------------------	---------------------------------



SW-2, 13 SEP 2018 to 11 OCT 2018

SW-2, 13 SEP 2018 to 11 OCT 2018



CATEGORY	A	B	C	D
CIRCLING	1020-1	740 (800-1)	1020-2 740 (800-2)	NA