

LOC I-PYU <b>110.35</b>	APP CRS <b>003°</b>	Rwy Idg <b>5999</b>	TDZE <b>650</b>
		Apt Elev <b>654</b>	

# LOC RWY 36

ILLINOIS VALLEY RGNL-WALTER A. DUNCAN FIELD (VYS)

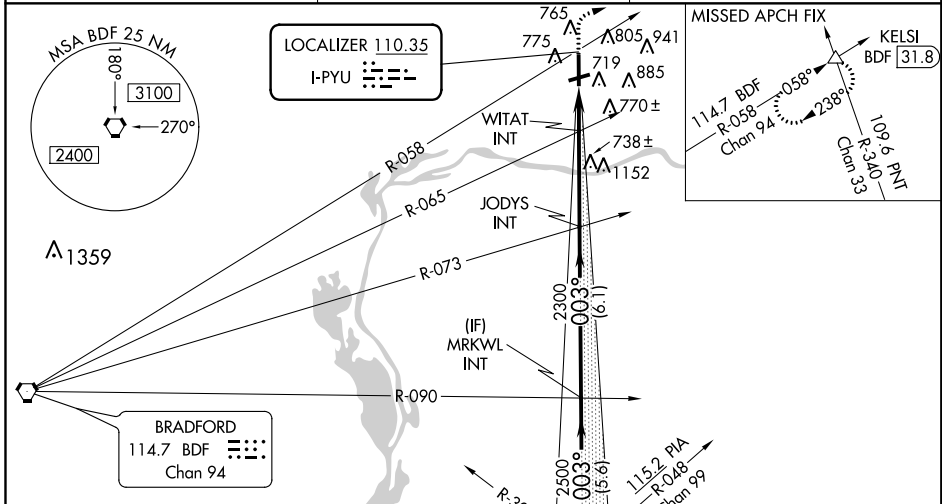
**NA** When local altimeter setting not received, use Marshall County altimeter setting and increase all MDA 80 feet; increase S-36 Cats C and D visibility 1 1/2 miles, increase Circling Cat C visibility to 2 miles and Circling Cat D visibility to 3 miles. WITAT fix minimums: increase S-36 Cats C and D visibility to 1 1/2 miles, increase Circling Cat C visibility to 2 miles and Cat D visibility to 3 miles. Inop table does not apply to Cats A and B. For inop ODALS, increase Cats C and D visibility to 1 3/4 miles. WITAT fix minimums: Inop table does not apply. For inop ODALS when using Marshall County altimeter setting, inop table does not apply to Cats A and B. For inop ODALS, increase Cats C and D visibility to 1 3/4. WITAT fix minimums: inop table does not apply to Cats A and B, increase Cats C and D visibility to 1 1/4 miles.

**ODALS**  
 MISSED APPROACH: Climb to 1100 then climbing right turn to 3000 on heading 063° and on BDF VORTAC R-058 to KELSI INT/BDF 31.8 DME and hold.

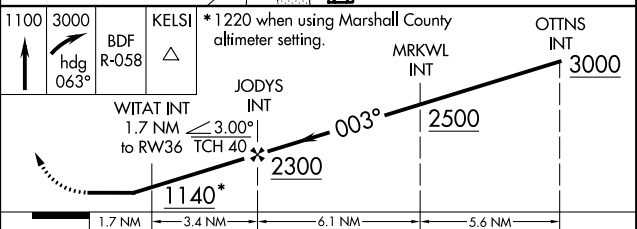
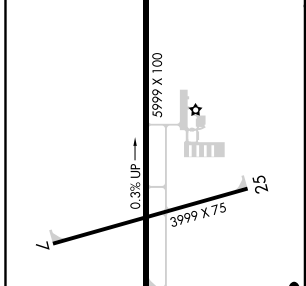
AWOS-3 <b>120.025</b>
--------------------------

CHICAGO CENTER <b>123.75 259.1</b>
---------------------------------------

UNICOM <b>123.0 (CTAF) 0</b>
---------------------------------



ELEV 654	TDZE 650
678±	



FAF to MAP 5.1 NM					
Knots	60	90	120	150	180
Min:Sec	5:06	3:24	2:33	2:02	1:42

CATEGORY	A	B	C	D
S-36	1140-1	490 (500-1)	1140-1 1/4	490 (500-1 1/4)
<b>CIRCLING</b>	1140-1 486 (500-1)	1240-1 586 (600-1)	1260-1 3/4 606 (700-1 3/4)	1460-2 1/2 806 (900-2 1/2)
WITAT FIX MINIMUMS				
S-36	1000-1 350 (400-1)			
<b>CIRCLING</b>	1120-1 466 (500-1)	1240-1 586 (600-1)	1260-1 3/4 606 (700-1 3/4)	1460-2 1/2 806 (900-2 1/2)

EC-3, 19 JUL 2018 to 16 AUG 2018

EC-3, 19 JUL 2018 to 16 AUG 2018