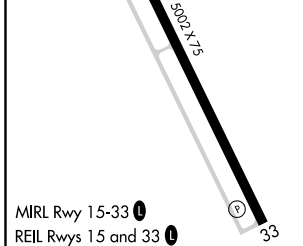
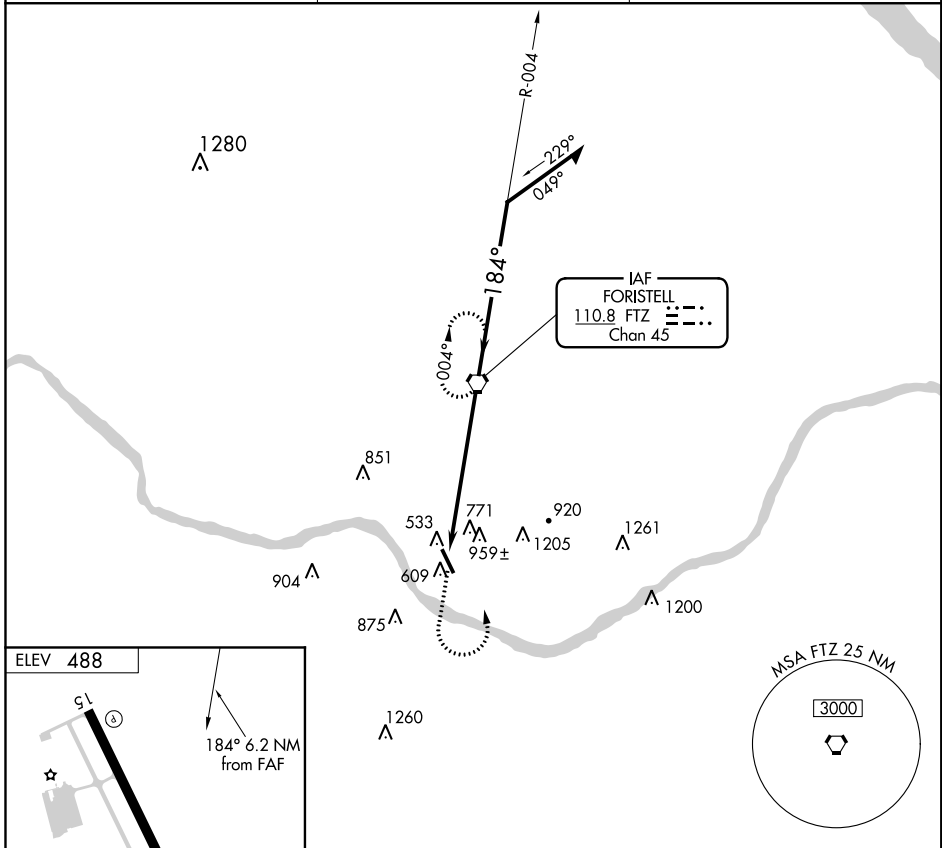


VORTAC FTZ <b>110.8</b> Chan <b>45</b>	APP CRS <b>184°</b>	Rwy Idg TDZE Apt Elev	<b>N/A</b> <b>N/A</b> <b>488</b>
--	------------------------	-----------------------------	--

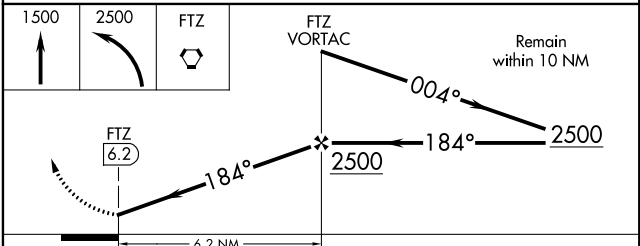
**VOR-A**  
WASHINGTON RGNL (FYG)

**▼** When local altimeter setting not received, use Spirit of St. Louis altimeter setting and increase all MDA 60 feet and increase Circling Cat C visibility ¼ mile.  
**▲** MISSED APPROACH: Climb to 1500 then climbing left turn to 2500 direct FTZ VORTAC and hold.

AWOS-3 <b>121.325</b>	ST. LOUIS APP CON <b>126.5 254.3</b>	UNICOM <b>122.8 (CTAF)</b>
--------------------------	---	-------------------------------



MIRL Rwy 15-33  
REIL Rwys 15 and 33



FAF to MAP 6.2 NM					
Knots	60	90	120	150	180
Min:Sec	6:12	4:08	3:06	2:29	2:04
CATEGORY	A	B	C	D	
CIRCLING	1220-1 732 (800-1)	1260-1¼ 772 (800-1¼)	1260-2¼ 772 (800-2¼)	NA	

NC-3, 19 JUL 2018 to 16 AUG 2018

NC-3, 19 JUL 2018 to 16 AUG 2018