

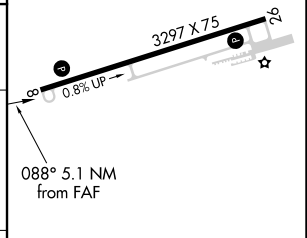
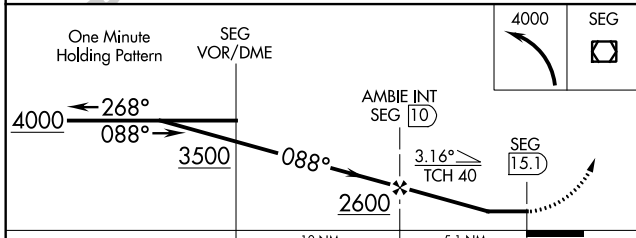
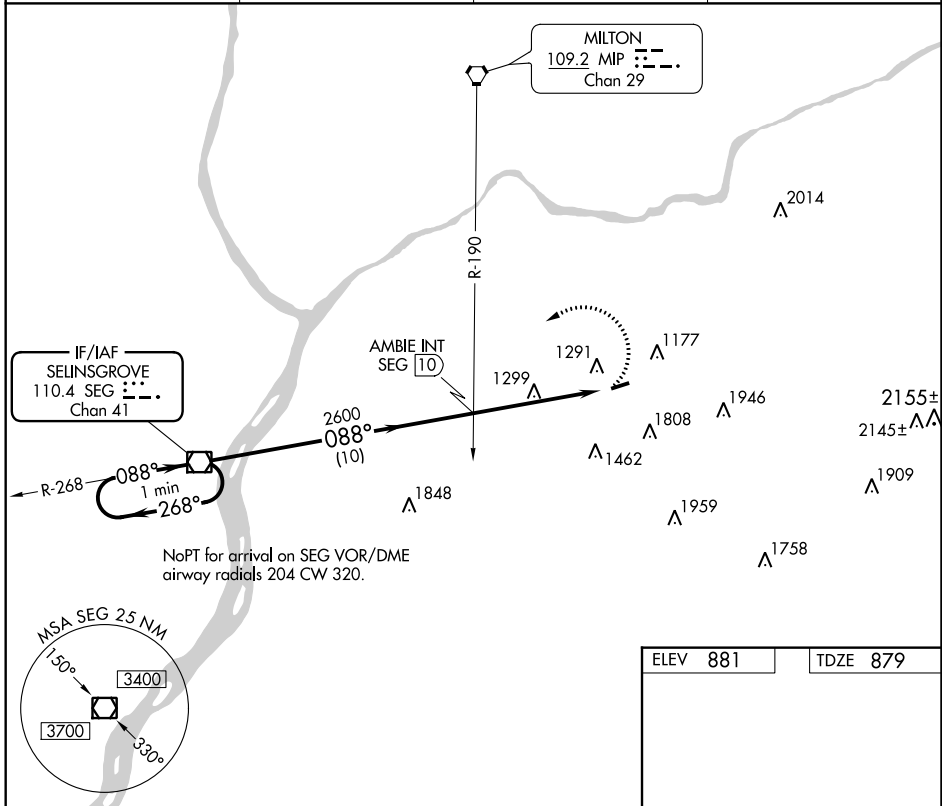
VOR/DME SEG	APP CRS	Rwy Idg	<b>3297</b>
<b>110.4</b>	<b>088°</b>	TDZE	<b>879</b>
Chan 41		Apt Elev	<b>881</b>

**VOR RWY 8**  
NORTHUMBERLAND COUNTY (N79)

**NA** Helicopter visibility reduction below 1 SM NA. Procedure NA at night. When local altimeter setting not received, use Selingsgrove altimeter setting and increase all MDA 100 feet.

MISSED APPROACH: Climbing left turn to 4000 direct SEG VOR/DME and hold.

AWOS-3 <b>119.175</b>	HARRISBURG APP CON <b>118.25 269.45</b>	UNICOM <b>122.8 (CTAF)</b>	<b>121.8 0</b>
--------------------------	--	-------------------------------	----------------



CATEGORY	A	B	C	D
S-8	1980-1¼ 1101 (1100-1¼)	1980-1½ 1101 (1100-1½)	1980-3 1101 (1100-3)	NA
CIRCLING	1980-1¼ 1099 (1100-1¼)	1980-1½ 1099 (1100-1½)	1980-3 1099 (1100-3)	NA

MRL Rwy 8-26	
REIL Rws 8 and 26	
FAF to MAP 5.1 NM	
Knots	60 90 120 150 180
Min:Sec	5:06 3:24 2:33 2:02 1:42

NE-4, 19 JUL 2018 to 16 AUG 2018

NE-4, 19 JUL 2018 to 16 AUG 2018