

APP CRS	Rwy Idg	4000
215°	TDZE	594
	Apl Elev	594

RNAV (GPS) RWY 21

LOGAN COUNTY (AAA)

RNP APCH.

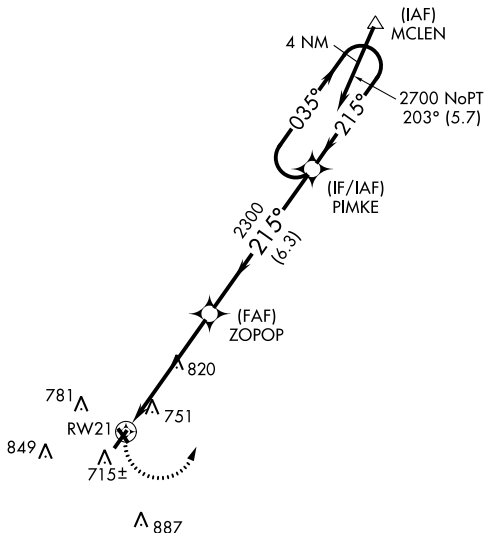
▼ Circling NA to Rwys 14 and 32. If local altimeter setting not received, use Springfield, IL altimeter setting and increase all MDAs 60 feet.
▲ VDP NA with Springfield, IL altimeter setting. Rwy 21 helicopter visibility reduction below 3/4 SM NA.

MISSED APPROACH: Climbing left turn to 2700 direct PIMKE and hold.

AWOS-3 118.775	SPRINGFIELD APP CON ★ 126.15 323.0	UNICOM 122.8 (CTAF) 0
--------------------------	--	---------------------------------

Procedure NA for arrivals at MCLEN via V9-69 northeast bound.

1301 **▲**



EC-3, 19 JUL 2018 to 16 AUG 2018

EC-3, 19 JUL 2018 to 16 AUG 2018

