

| | | |
|--|------------------------|---|
| WAAS CH 42724 W24A | APP CRS 239° | Rwy Idg 2668 TDZE 671 Apt Elev 671 |
|--|------------------------|---|

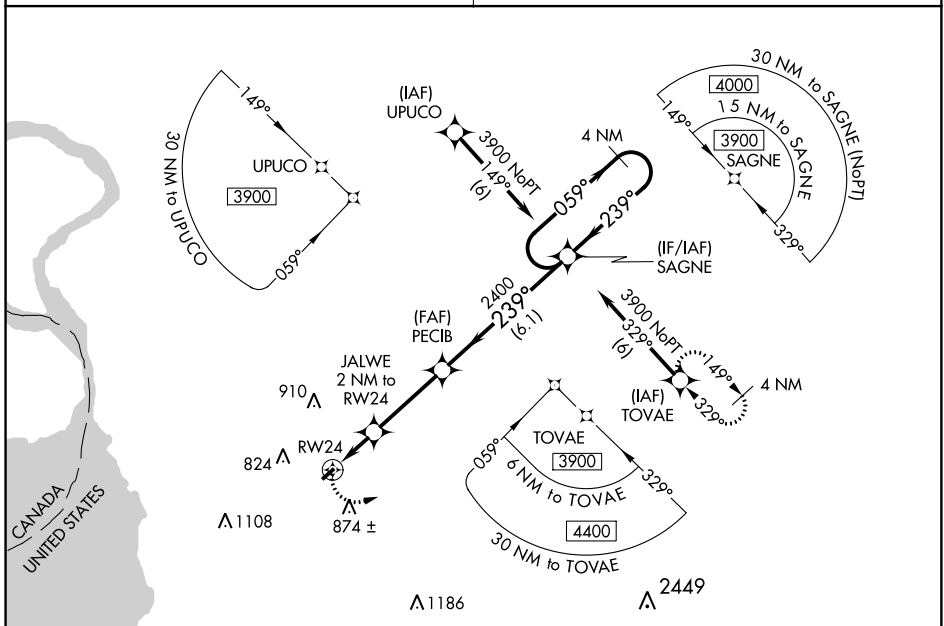
RNAV (GPS) RWY 24

BUFFALO AIRFIELD (9G4)

⚠ Circling to Rwy 6 NA at night. DME/DME RNP-0.3 NA. Visibility reduction by helicopters NA. Use Buffalo Niagara Intl altimeter setting, when not received, use Niagara Falls Intl altimeter setting and increase all MDA 60 feet. VDP NA with Niagara Falls Intl altimeter setting.

⚠ MISSED APPROACH: Climbing left turn to 3900 direct TOVAE and hold.

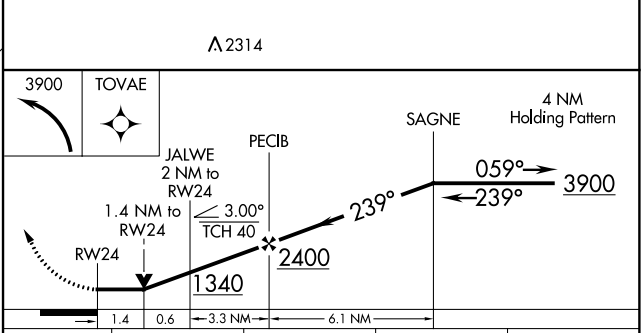
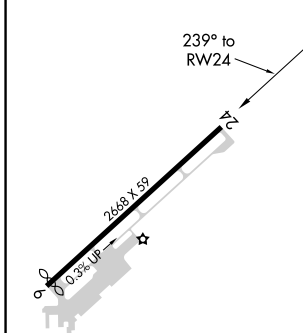
| | |
|--|---------------------------------|
| BUFFALO APP CON 126.15 263.125 | UNICOM 122.975 (CTAF) |
|--|---------------------------------|



NE-2, 19 JUL 2018 to 16 AUG 2018

NE-2, 19 JUL 2018 to 16 AUG 2018

| | |
|----------|----------|
| ELEV 671 | TDZE 671 |
|----------|----------|



| CATEGORY | A | B | C | D |
|----------|--------|-------------|---|----|
| LP MDA | 1160-1 | 489 (500-1) | | NA |
| LNAV MDA | 1160-1 | 489 (500-1) | | NA |
| CIRCLING | 1240-1 | 569 (600-1) | | NA |