

VOR/DME ATR	APP CRS	Rwy ldg	5331
112.6	234°	TDZE	51
Chan 73		Apt Elev	50

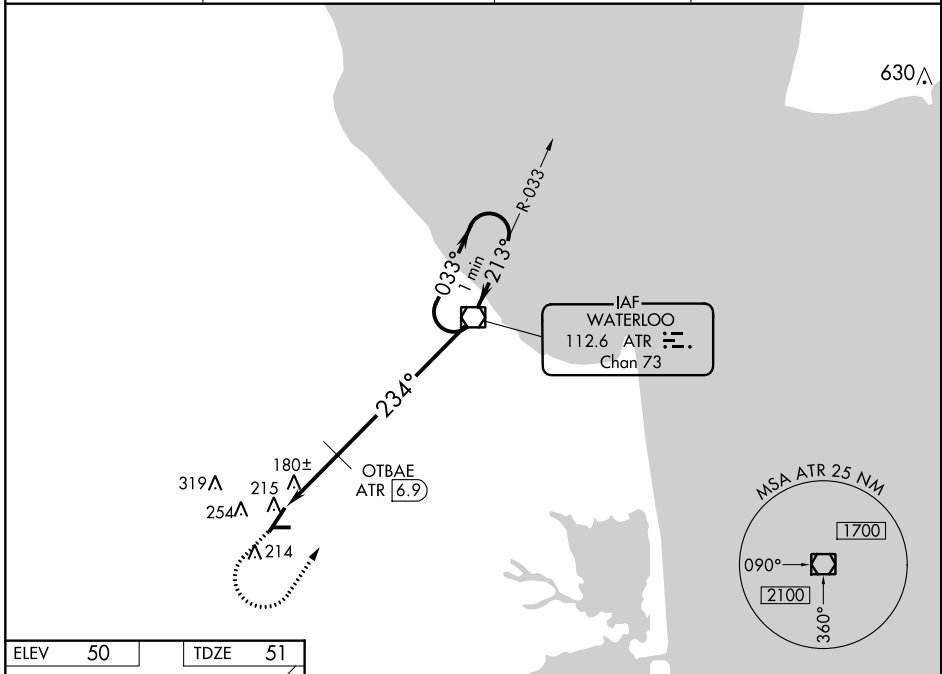
VOR RWY 22

DELAWARE COASTAL (GED)

▼ When local altimeter setting not received, use Salisbury altimeter setting and increase all MDA 60 feet; increase S-22 and Circling Cats C/D visibility ¼ mile;
 ▲ OTBAE fix minimums increase S-22 and Circling Cats C/D visibility ¼ mile.
 Circling Rwy 10, 28 NA at night.

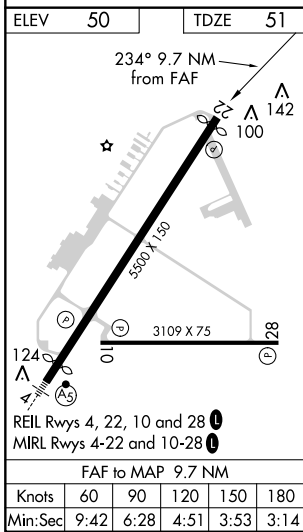
MISSED APPROACH: Climb to 800 then climbing left turn to 3000 direct ATR VOR/DME and hold.

ASOS 118.375	DOVER APP CON 132.425 257.875	CLNC DEL 125.55	UNICOM 123.0 (CTAF) 0
------------------------	---	---------------------------	---------------------------------



NE-3, 19 JUL 2018 to 16 AUG 2018

NE-3, 19 JUL 2018 to 16 AUG 2018



800	3000	ATR	
↑	↶	☐	
		ATR VOR/DME	One Minute Holding Pattern
		ATR 9.7	OTBAE ATR 6.9
		680*	2.83° TCH 52
CATEGORY	A	B	C D
S-22	680-1	629 (700-1)	680-1¾ 629 (700-1¾)
C CIRCLING	680-1	630 (700-1)	720-1¾ 670 (700-1¾) 720-2 670 (700-2)
OTBAE FIX MINIMUMS			
S-22	440-1	389 (400-1)	440-1⅛ 389 (400-1⅛)
C CIRCLING	560-1 510 (600-1)	580-1 530 (600-1)	720-1¾ 670 (700-1¾) 720-2 670 (700-2)

* 740 when using Salisbury altimeter setting.