

WAAS CH 60921 W22A	APP CRS 225°	Rwy Idg 5331 TDZE 51 Apt Elev 50
--	------------------------	---

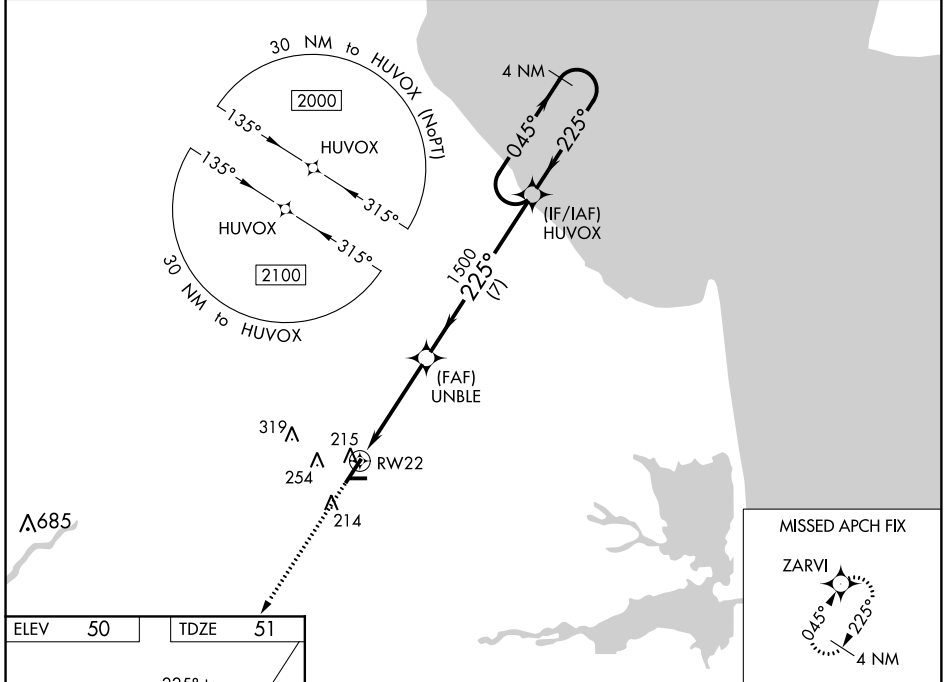
RNAV (GPS) RWY 22

DELAWARE COASTAL (GED)

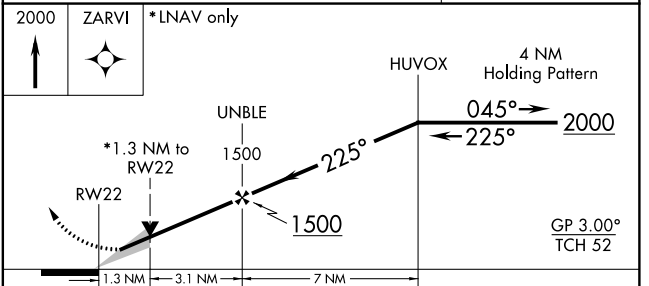
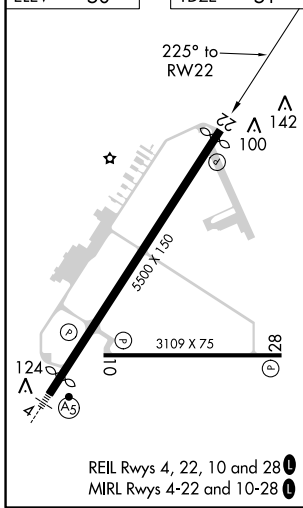
⚠ For uncompensated Baro-VNAV systems, LNAV/VNAV NA below -11°C (13°F) or above 54°C (130°F). DME/DME RNP-0.3 NA. When local altimeter setting not received, use Salisbury altimeter setting and increase all DA 52 feet and all MDA 60 feet; increase LNAV/VNAV all Cats, and Circling Cats C/D visibility ¼ mile. Baro-VNAV and VDP NA when using Salisbury altimeter setting. Circling Rwy 10, 28 NA at night.

MISSSED APPROACH: Climb to 2000 direct ZARVI and hold.

ASOS 118.375	DOVER APP CON 132.425 257.875	CLNC DEL 125.55	UNICOM 123.0 (CTAF) ①
------------------------	---	---------------------------	---------------------------------



ELEV 50	TDZE 51
---------	---------



CATEGORY	A	B	C	D
LPV DA		301-1	250 (300-1)	
LNAV/VNAV DA		446-1¼	395 (400-1¼)	
LNAV MDA	500-1	449 (500-1)	500-1½	449 (500-1½)
CIRCLING	560-1 510 (600-1)	580-1 530 (600-1)	720-1¾ 670 (700-1¾)	720-2 670 (700-2)

NE-3, 19 JUL 2018 to 16 AUG 2018

NE-3, 19 JUL 2018 to 16 AUG 2018