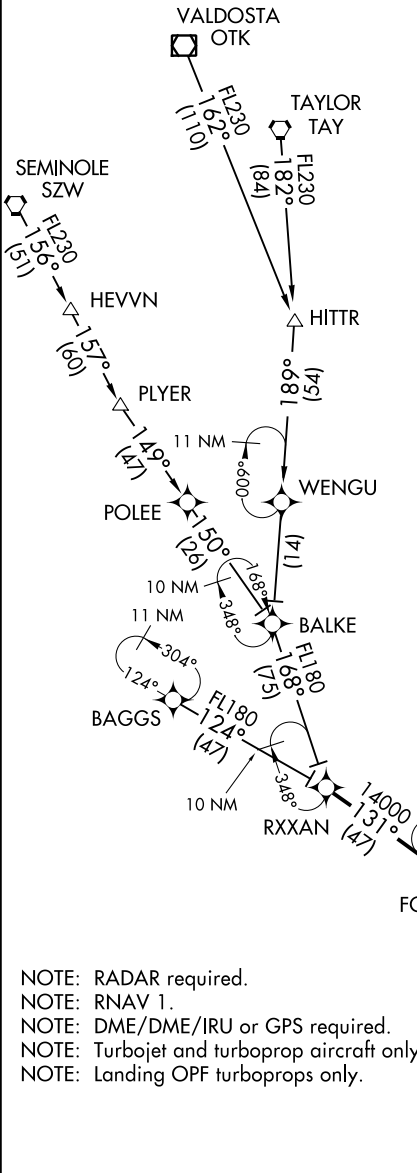


MIAMI APP CON  
133.775 285.6  
FORT LAUDERDALE/HOLLYWOOD INTL D-ATIS  
135.0  
FORT LAUDERDALE EXECUTIVE ATIS  
119.85  
POMPANO BEACH AIRPARK ATIS  
120.55  
MIAMI-OPA LOCKA EXECUTIVE ATIS  
125.9  
NORTH PERRY ATIS  
135.475



BAGGS TRANSITION (BAGGS.JINGL5)  
SEMINOLE TRANSITION (SZW.JINGL5)  
TAYLOR TRANSITION (TAY.JINGL5)  
VALDOSTA TRANSITION (OTK.JINGL5)

From RXXAN on track 131° to FORTL, then on track 126° to SWAGS, then on track 127° to JINGL, then on track 100° to JAREM, then on track 090° to BEPAC, then on heading 093°, or as assigned by ATC. Expect RADAR vectors.

LOST COMMUNICATIONS:  
**FLL LANDING EAST:** Continue track to JAREM, then proceed direct HOLID, intercept Rwy 10L final approach course and conduct approach.  
**FLL LANDING WEST:** Continue track to BEPAC, then proceed direct to CEDLU, turn right to intercept Rwy 28R final approach course and conduct approach.

- NOTE: RADAR required.
- NOTE: RNAV 1.
- NOTE: DME/DME/IRU or GPS required.
- NOTE: Turbojet and turboprop aircraft only.
- NOTE: Landing OPF turboprops only.

NOTE: Chart not to scale.

SE-3: 19 JUL 2018 to 16 AUG 2018

SE-3: 19 JUL 2018 to 16 AUG 2018