

VOR/DME STS 113.0 Chan 77	APP CRS 146°	Rwy Idg TDZE 122 Apt Elev 129	5880
--	------------------------	---	-------------

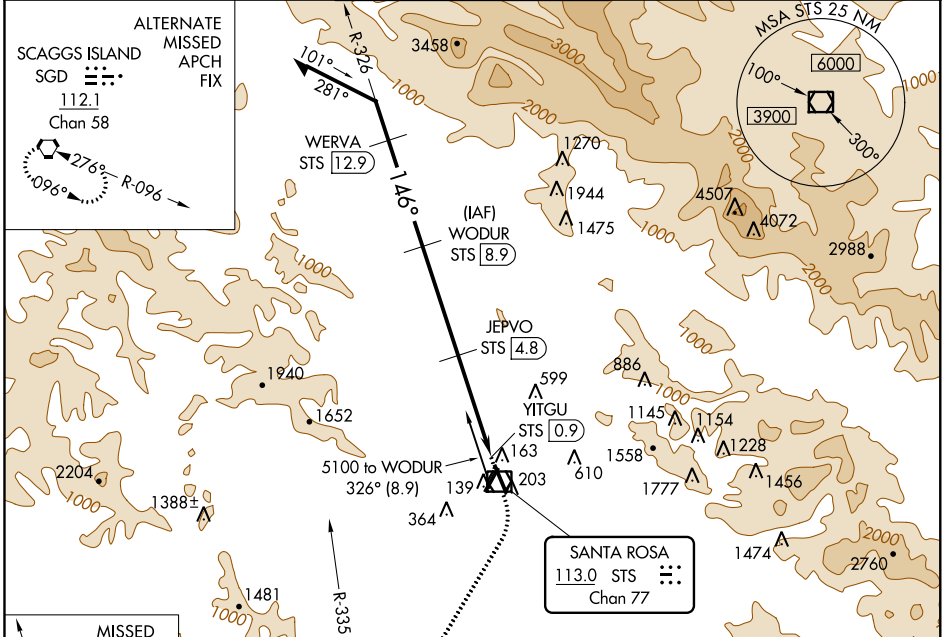
VOR/DME RWY 14

CHARLES M SCHULZ-SONOMA COUNTY (STS)

⚠ Helicopter visibility reduction below 3/4 SM NA.
⚠ When local altimeter setting not received, use Petaluma altimeter setting and increase all MDA 60 feet, and increase S-14 Cats C and D visibility 1/2 mile. Increase Circling Cat A visibility 1/4 mile.

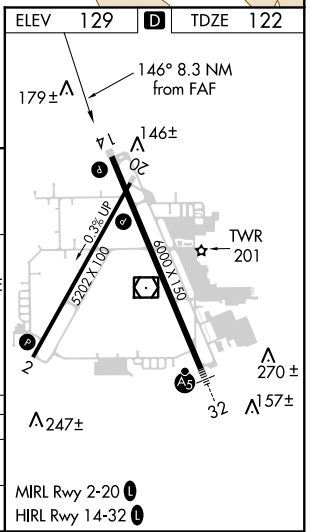
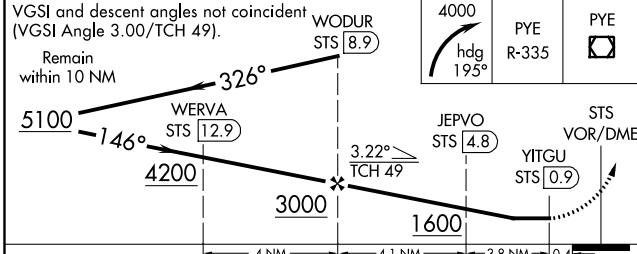
MISSED APPROACH: Climbing right turn to 4000 on heading 195° and on PYE VOR/DME R-335 to PYE VOR/DME and hold.

ATIS 120.55	OAKLAND CENTER 127.8 353.5	SANTA ROSA TOWER ★ 118.5 (CTAF) 363.0	GND CON 121.9	UNICOM 122.95
-----------------------	--------------------------------------	---	-------------------------	-------------------------



ALTERNATE MISSED APCH FIX
 SCAGGS ISLAND SGD APCH FIX
 112.1 Chan 58
 276° R-096
 096°

MISSED APCH FIX
 POINT REYES PYE APCH FIX
 113.7 Chan 84
 326° R-335



CATEGORY	A	B	C	D
S-14	880-1 758 (800-1)	880-1 1/4 758 (800-1 1/4)	880-2 1/2 758 (800-2 1/2)	
CIRCLING	880-1 751 (800-1)	880-1 1/4 751 (800-1 1/4)	1080-3 951 (1000-3)	1420-3 1291 (1300-3)

SW-2, 19 JUL 2018 to 16 AUG 2018

SW-2, 19 JUL 2018 to 16 AUG 2018