

# TACAN RWY 3L

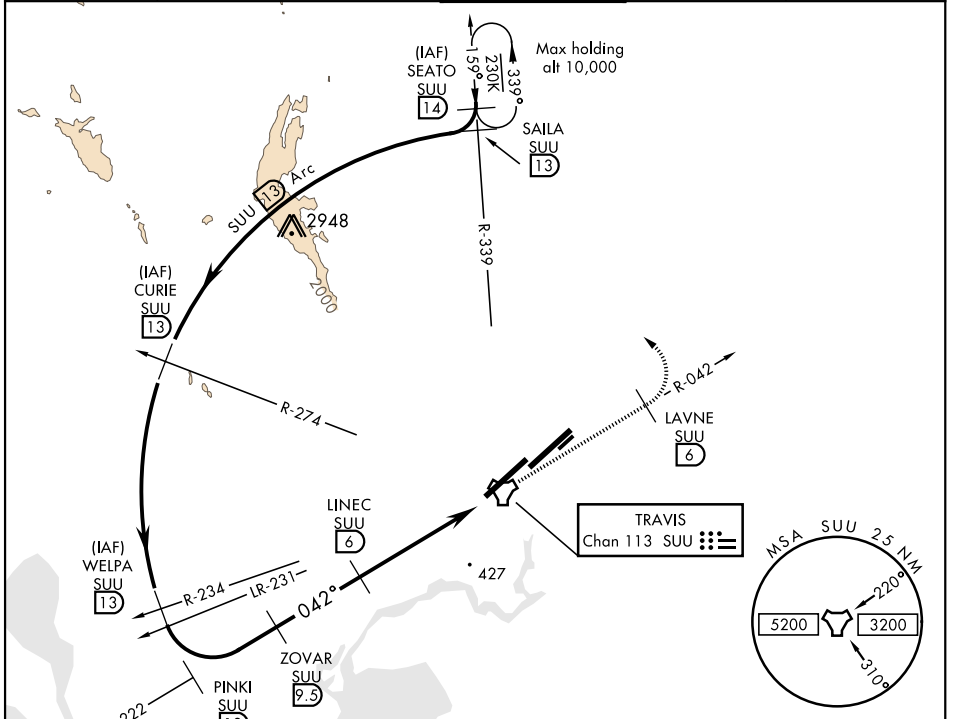
TACAN SUU Chan <b>113</b>	APCH CRS <b>042°</b>	Rwy ldg <b>11,001</b> THRE <b>33</b> Arprt Elev <b>63</b>
------------------------------	-------------------------	---

AL-488 [USAF]

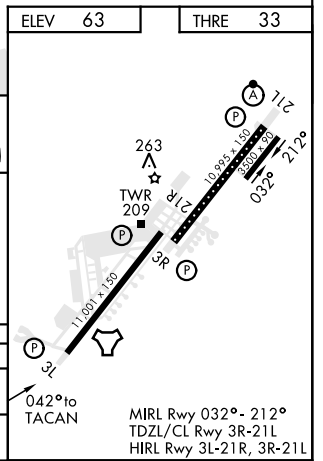
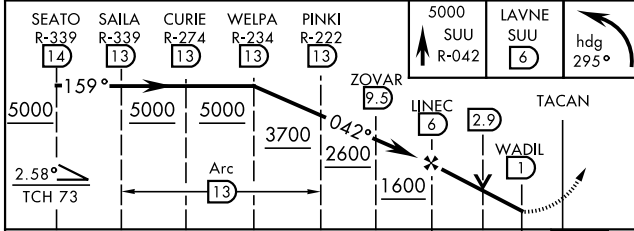
TRAVIS AFB (KSUU)

<p><b>▽</b> * Circling not authorized NW of Rwy 3L-21R.</p>	<p>MISSED APPROACH: Climb to 5000 via SUU TACAN R-042 to LAVNE, then turn left via 295° course to intercept SUU R-339 to SEATO and hold, continue climb in hold to 5000.</p>
---	--

<p>ATIS <b>135.55 292.125</b></p>	<p>TRAVIS APP CON <b>119.9(S) 126.6(N) 281.45</b></p>	<p>TRAVIS TOWER <b>120.75 254.4</b></p>	<p>GND CON <b>121.8 289.4</b></p>	<p>CLNC DEL <b>127.55 335.8</b></p>
---------------------------------------	---	---	---------------------------------------	---



ELEV 63	THRE 33
---------	---------



CATEGORY	A	B	C	D	E
S-3L	740/55 707 (700-1)		740-2	707	(700-2)
<b>C</b> CIRCLING*	740-1 677 (700-1)		740-2 677 (700-2)	1200-3	1137 (1200-3)

# TACAN RWY 3L

SW-2, 19 JUL 2018 to 16 AUG 2018

SW-2, 19 JUL 2018 to 16 AUG 2018