

FAIRFIELD, CALIFORNIA

TACAN RWY 21L

TACAN SUU Chan 113	APCH CRS 209°	Rwy Idg 10,995 THRE 53 Arpt Elev 63
---------------------------	----------------------	--

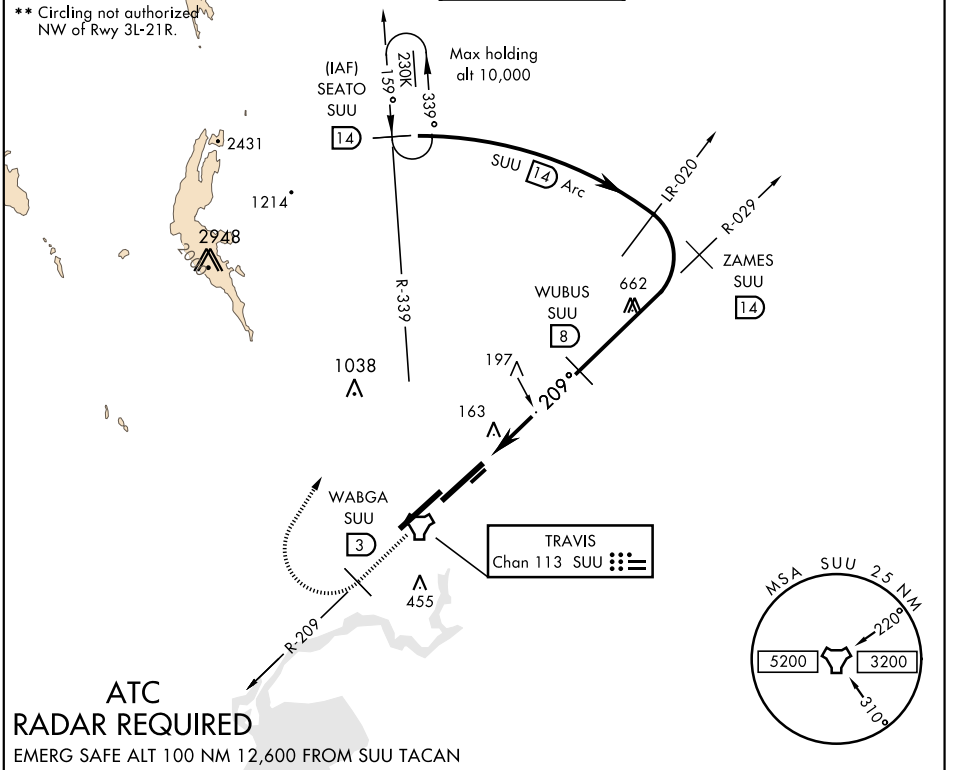
AL-488 [USAF]

TRAVIS AFB (KSUU)

▼ *When ALS inop, increase CAT A RVR to 55 and vis to 1 mile, CAT B RVR to 60 and vis to 1¼ miles, CAT CDE vis to 2 miles.

ALSF-2 MISSED APPROACH: Climb to 5000 via SUU TACAN R-209 to WABGA, then turn right hdg 015° to intercept SUU R-339 to SEATO and hold, continue climb in hold to 5000.

ATIS 135.55 292.125	TRAVIS APP CON 119.9(S) 126.6(N) 281.45	TRAVIS TOWER 120.75 254.4	GND CON 121.8 289.4	CLNC DEL 127.55 335.8
-------------------------------	---	-------------------------------------	-------------------------------	---------------------------------



5000 SUU R-209	SUU 3	SEATO SUU 14	WUBUS SUU 8	ZAMES SUU R-029	SEATO SUU R-339	ELEV 63	THRE 53
TACAN	AMNOT SUU 3.6	5.2	1600	3000	5000	209° 4.9 NM from 8.0 DME	
0.5 NM		4.4 NM		Arc 14		263 A TWR 209 11,995 4,150 10,995 1,500 10,350 1,250 9,700 1,000 9,050 750 8,400 500 7,750 250 7,100 0	
CATEGORY	A	B	C	D	E	MIRL Rwy 032°- 212° TDZL/CL Rwy 3R-21L HIRL Rwy 3L-21R, 3R-21L	
S-21L*	800/24 747 (800-½)	800/40 747 (800-¾)	800-1¼	747 (800-1¼)			
CIRCLING**	800-1 737 (800-1)	800-1¼ 737 (800-1¼)	800-2 737 (800-2)	1200-3	1137 (1200-3)		

FAIRFIELD, CALIFORNIA

38°16'N-121°56'W

TRAVIS AFB (KSUU)

Amr 2 19JUL18

TACAN RWY 21L

SW-2, 19 JUL 2018 to 16 AUG 2018

SW-2, 19 JUL 2018 to 16 AUG 2018