

(OSVEE.OSVEE1) 17117

# OSVEE ONE ARRIVAL (RNAV)

AL-488 (FAA)

TRAVIS AFB (KSUU)  
FAIRFIELD, CALIFORNIA

## ARRIVAL ROUTE DESCRIPTION

LIBBO TRANSITION (LIBBO.OSVEE1)

ROVUE TRANSITION (ROVUE.OSVEE1)

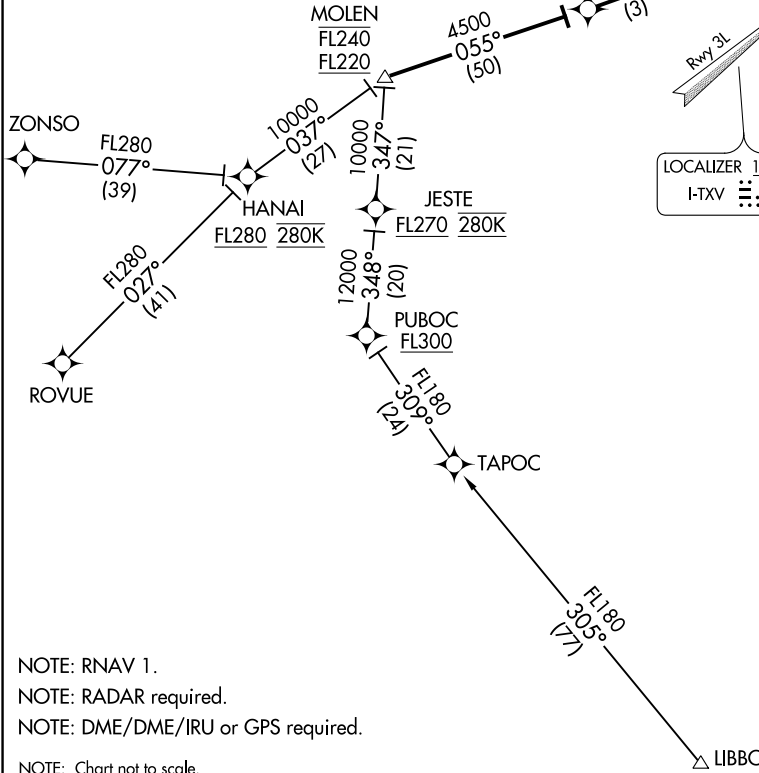
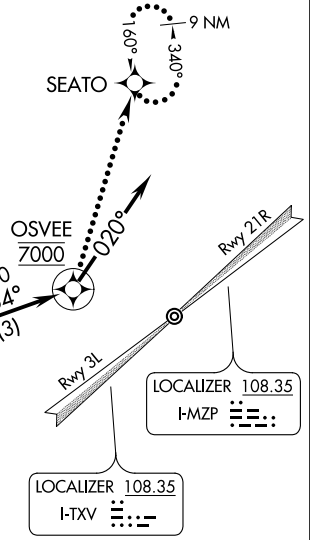
ZONSO TRANSITION (ZONSO.OSVEE1)

From MOLEN on track 055° to OCOVA, thence . . . .

. . . . LANDING RUNWAYS 3L, 21R: From OCOVA on track 054° to cross OSVEE at 7000, then on heading 020°, expect RADAR vectors to final approach course.

LOST COMMUNICATIONS: From OSVEE, proceed direct SEATO. Execute ILS or LOC RWY 21R or TACAN RWY 3L approach. If unable, hold at SEATO as depicted, maintain 6000.

TRAVIS APP CON  
126.6 281.45 (N)  
119.9 322.325 (S)  
TRAVIS TOWER  
120.75 254.4  
GND CON  
121.8 289.4  
D-ATIS  
135.55 292.125



NOTE: RNAV 1.  
NOTE: RADAR required.  
NOTE: DME/DME/IRU or GPS required.  
NOTE: Chart not to scale.

SW-2, 19 JUL 2018 to 16 AUG 2018

SW-2, 19 JUL 2018 to 16 AUG 2018

# OSVEE ONE ARRIVAL (RNAV)

(OSVEE.OSVEE1) 10JAN13

FAIRFIELD, CALIFORNIA  
TRAVIS AFB (KSUU)