

FAIRFIELD, CALIFORNIA

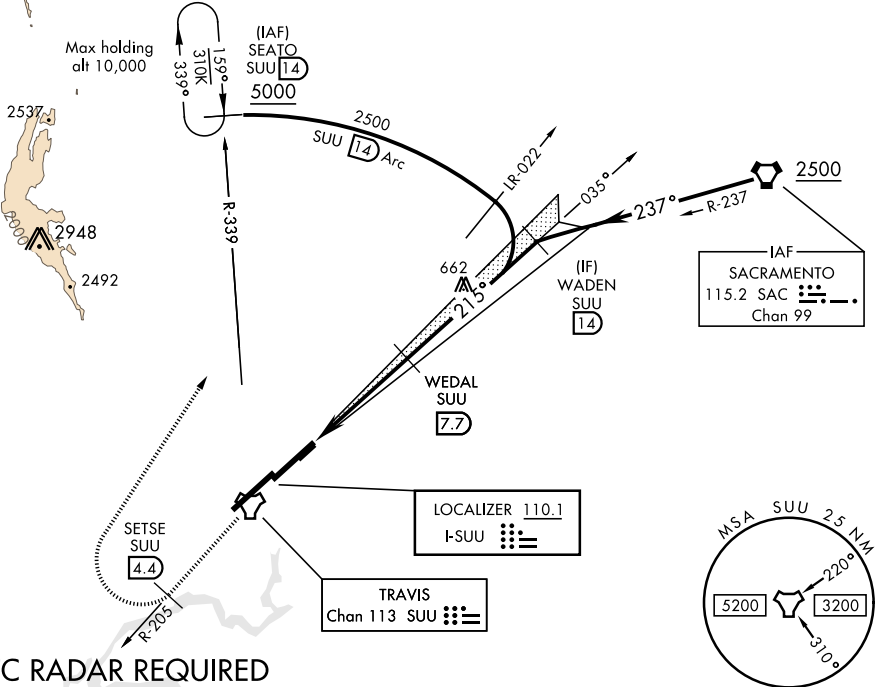
ILS RWY 21L (CAT II)

LOC I-SUU 110.1	APCH CRS 215°	Rwy ldg 10,995 TDZE 58 Arpt Elev 63	AL-488 [USAF]	TRAVIS AFB (KSUU)
ALSF-2		† MISSED APPROACH: Climb to 5000 on SUU R-205 to SETSE. Then climbing right turn 020°, intercept SUU R-339 to SEATO and hold, continue climb and hold to 5000.		

ATIS 135.55 292.125	TRAVIS APP CON 119.9(S) 126.6(N) 281.45	TRAVIS TOWER 120.75 254.4	GND CON 121.8 289.4	CLNC DEL 127.55 335.8
-------------------------------	---	-------------------------------------	-------------------------------	---------------------------------

CATEGORY II ILS SPECIAL AIRCREW & AIRCRAFT CERTIFICATION REQUIRED

† Missed Approach requires use of RNAV or ATC monitoring.



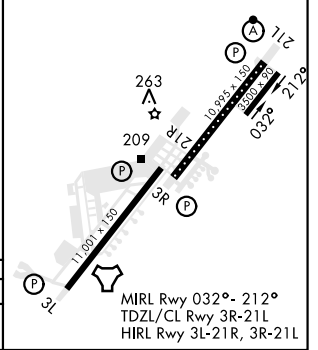
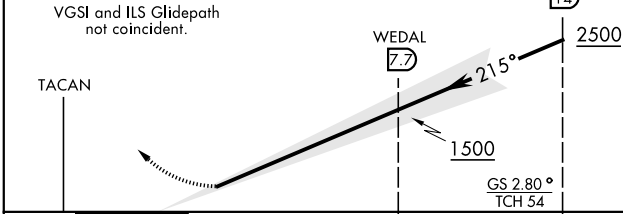
ATC RADAR REQUIRED

EMERG SAFE ALT 100 NM 12,600 FROM "SUU" TACAN



The difference between the VGSi TCH (75) and the procedure TCH (54) is greater than 3'.

ELEV	63	TDZE	58
------	----	------	----



CATEGORY	A	B	C	D	E
S-ILS 21L	RA 83/12		100	DA 158	

FAIRFIELD, CALIFORNIA

38°16'N-121°56'W

TRAVIS AFB (KSUU)

Orig 20JUL17

ILS RWY 21L (CAT II)

SW-2, 19 JUL 2018 to 16 AUG 2018

SW-2, 19 JUL 2018 to 16 AUG 2018