

APP CRS	Rwy Idg	<b>3220</b>
<b>200°</b>	TDZE	<b>47</b>
	Apt Elev	<b>47</b>

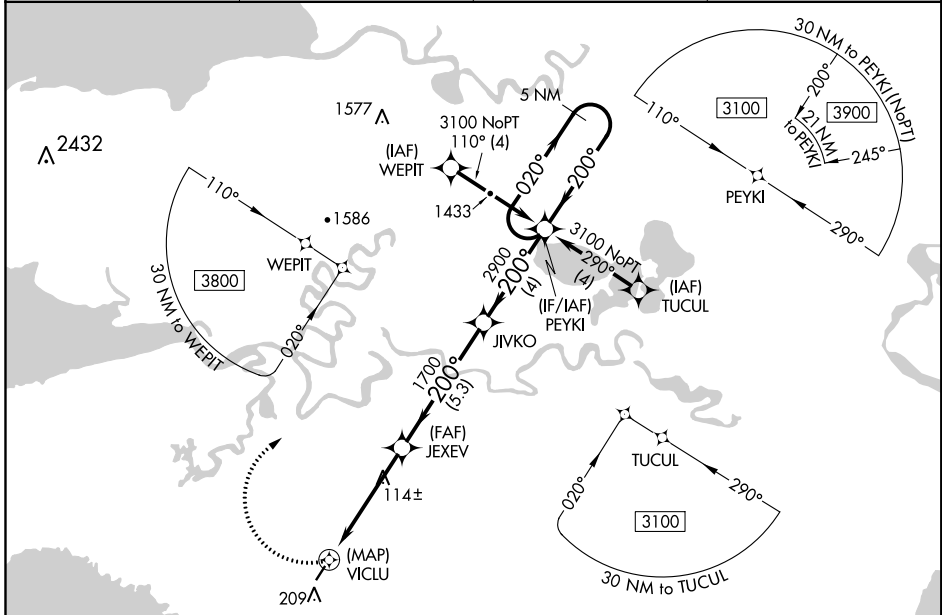
# RNAV (GPS) RWY 20

CHEVAK (VAK)(PAVA)

**▽** DME/DME RNP- 0.3 NA.  
**▲** When local altimeter setting not received, use Hooper Bay altimeter setting and increase all MDA 60 feet.

**MISSED APPROACH:** Climbing right turn to 3100 direct PEYKI and hold.

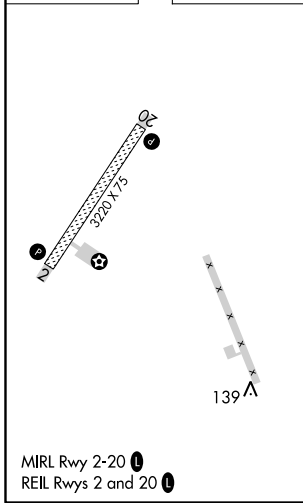
AWOS-3 <b>120.625</b>	ANCHORAGE CENTER <b>124.5 226.8</b>	UNICOM <b>122.8</b>	CTAF <b>123.0</b>
--------------------------	--	------------------------	----------------------



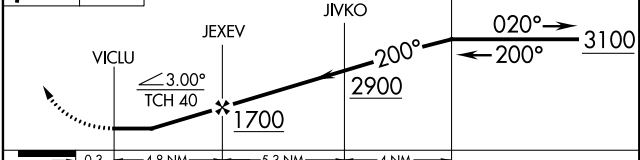
AK, 24 MAY 2018 to 19 JUL 2018

AK, 24 MAY 2018 to 19 JUL 2018

ELEV <b>47</b>	TDZE <b>47</b>
----------------	----------------



**3100** PEYKI **5 NM Holding Pattern**  
 VGSI and descent angles not coincident (VGSI Angle 3.00/TCH 25).



CATEGORY	A	B	C	D
LNAV MDA	460-1	413 (500-1)	NA	
CIRCLING	520-1	473 (500-1)	NA	