

WAAS CH 86929 W34A	APP CRS 336°	Rwy Idg TDZE Apt Elev	5000 324 324
--	------------------------	-----------------------------	---

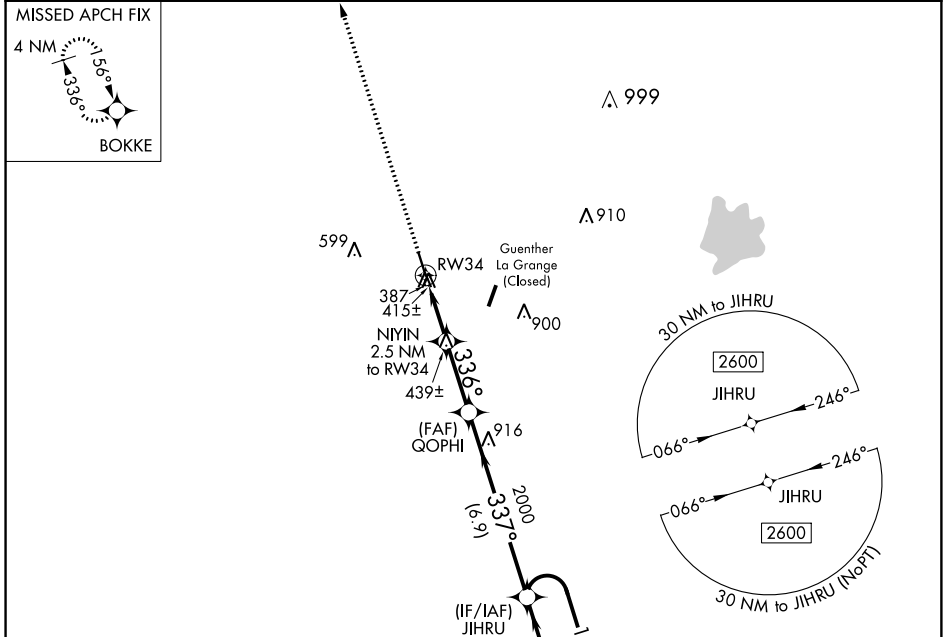
RNAV (GPS) RWY 34

FAYETTE RGNL AIR CENTER (3T5)

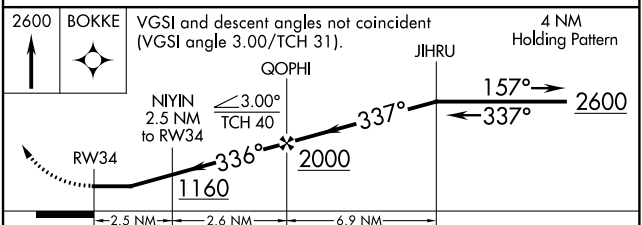
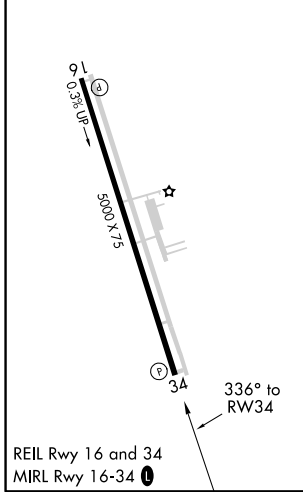
⚠ When local altimeter setting not received, use Giddings-Lee altimeter setting and increase all MDA 60 feet, increase LP and LNAV Cat C visibility 1/4 mile. DME/DME RNP-0.3 NA. Rwy 34 helicopter visibility reduction below 3/4 SM NA.

MISSED APPROACH: Climb to 2600 direct BOKKE and hold.

AWOS-3 124.175	AUSTIN APP CON 120.875 270.25	GCO 121.725	UNICOM 122.7 (CTAF) 0
--------------------------	---	-----------------------	---------------------------------



ELEV 324	TDZE 324
----------	----------



CATEGORY	A	B	C	D
LP MDA	700-1		376 (400-1)	NA
LNAV MDA	740-1	416 (500-1)	740-1 1/8 416 (500-1 1/8)	NA
CIRCLING	740-1 416 (500-1)	780-1 456 (500-1)	780-1 1/2 456 (500-1 1/2)	NA

SC-5, 21 JUN 2018 to 19 JUL 2018

SC-5, 21 JUN 2018 to 19 JUL 2018