

WAAS CH 42928 W16A	APP CRS 156°	Rwy Idg TDZE Apt Elev	5000 318 324
--	------------------------	-----------------------------	---

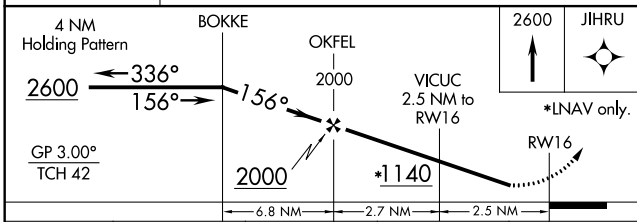
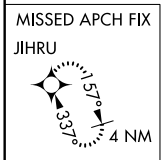
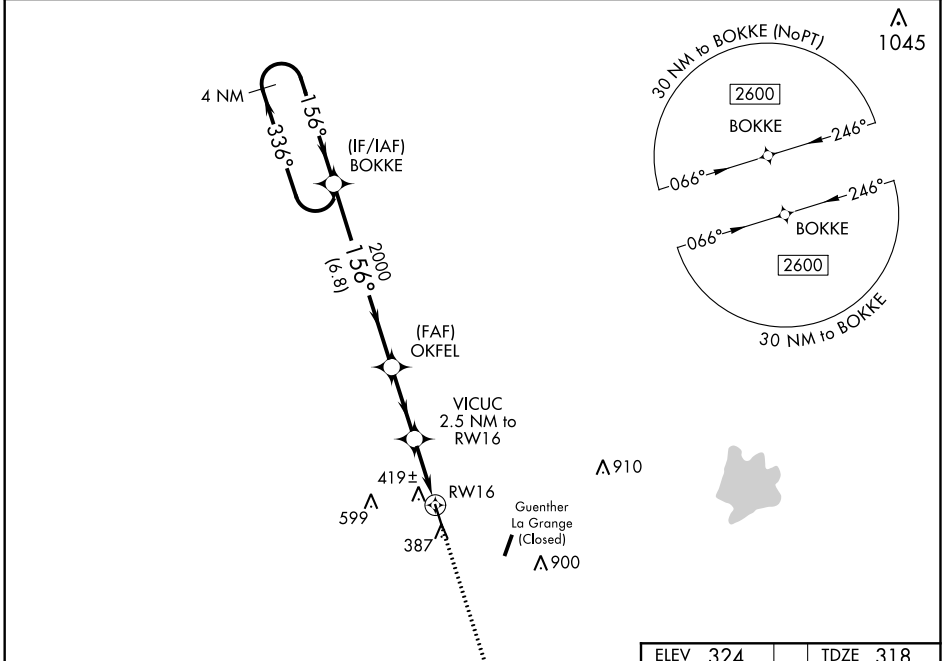
RNAV (GPS) RWY 16

FAYETTE RGNL AIR CENTER (3T5)

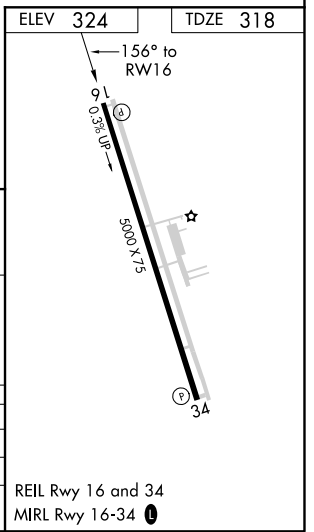
⚠ When local altimeter setting not received, use Giddings-Lee altimeter setting and increase DA 59 feet, all MDA 60 feet, increase LNAV Cat C visibility ¼ mile. DME/DME RNP-0.3 NA. Rwy 16 helicopter visibility reduction below ¾ SM NA.

MISSED APPROACH: Climb to 2600 direct JIHRU and hold.

AWOS-3 124.175	AUSTIN APP CON 120.875 270.25	GCO 121.725	UNICOM 122.7 (CTAF) 0
--------------------------	---	-----------------------	---------------------------------



CATEGORY	A	B	C	D
LPV DA	568-1	250 (300-1)		NA
LNAV MDA	680-1	362 (400-1)		NA
CIRCLING	740-1 416 (500-1)	780-1 456 (500-1)	780-1½ 456 (500-1½)	NA



SC-5, 21 JUN 2018 to 19 JUL 2018

SC-5, 21 JUN 2018 to 19 JUL 2018