

VORTAC OKK 113.5 Chan 82	APP CRS 204°	Rwy Idg TDZE Apt Elev	N/A N/A 936
--	------------------------	-----------------------------	--

VOR-A
SHERIDAN (5I4)

NA Procedure NA at night except by prior arrangement for runway lights. DME required. Use Indianapolis Intl altimeter setting.

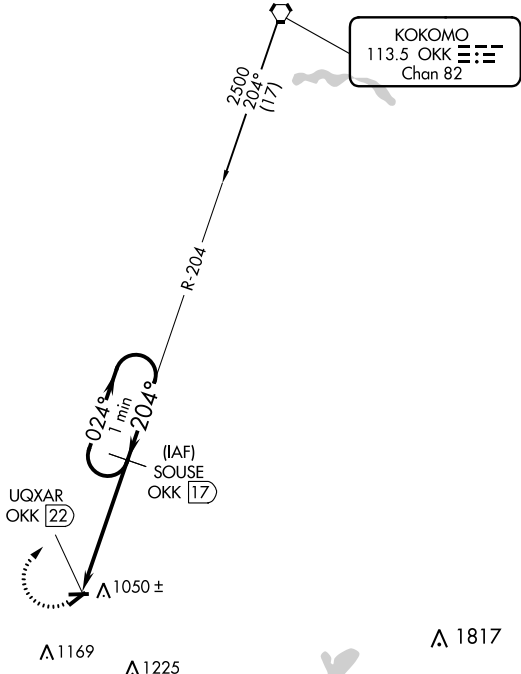
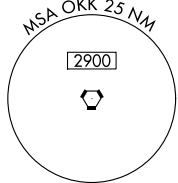
MISSED APPROACH: Climbing right turn to 2500 on OKK VORTAC R-204 to SOUSE/17 DME and hold.

INDIANAPOLIS ASOS
134.25

INDIANAPOLIS APP CON
124.65 317.8

UNICOM
123.075 (CTAF)

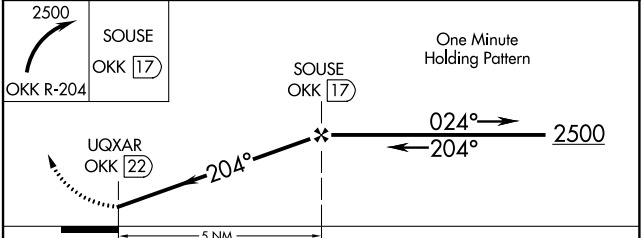
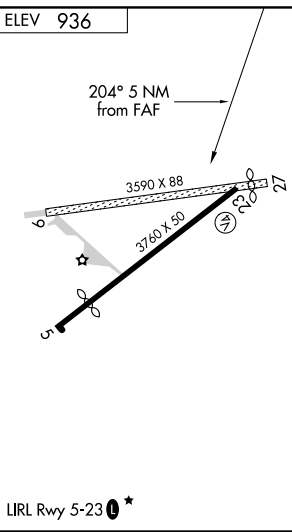
DME REQUIRED



KOKOMO
113.5 OKK
Chan 82

EC-2, 21 JUN 2018 to 19 JUL 2018

EC-2, 21 JUN 2018 to 19 JUL 2018



CATEGORY	A	B	C	D
CIRCLING	1460-1 524 (600-1)	1480-1 544 (600-1)	1480-1½ 544 (600-1½)	NA