

APP CRS	Rwy Idg	<b>3190</b>
<b>052°</b>	TDZE	<b>932</b>
	Apt Elev	<b>936</b>

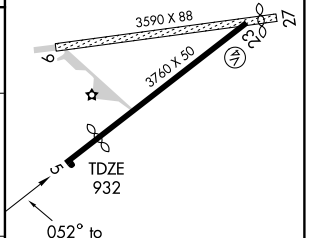
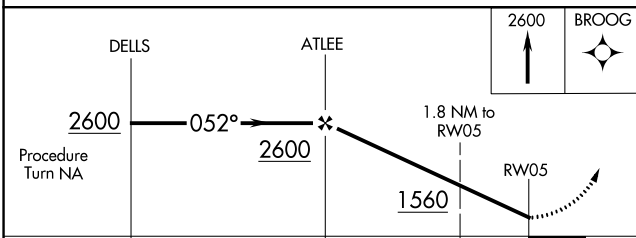
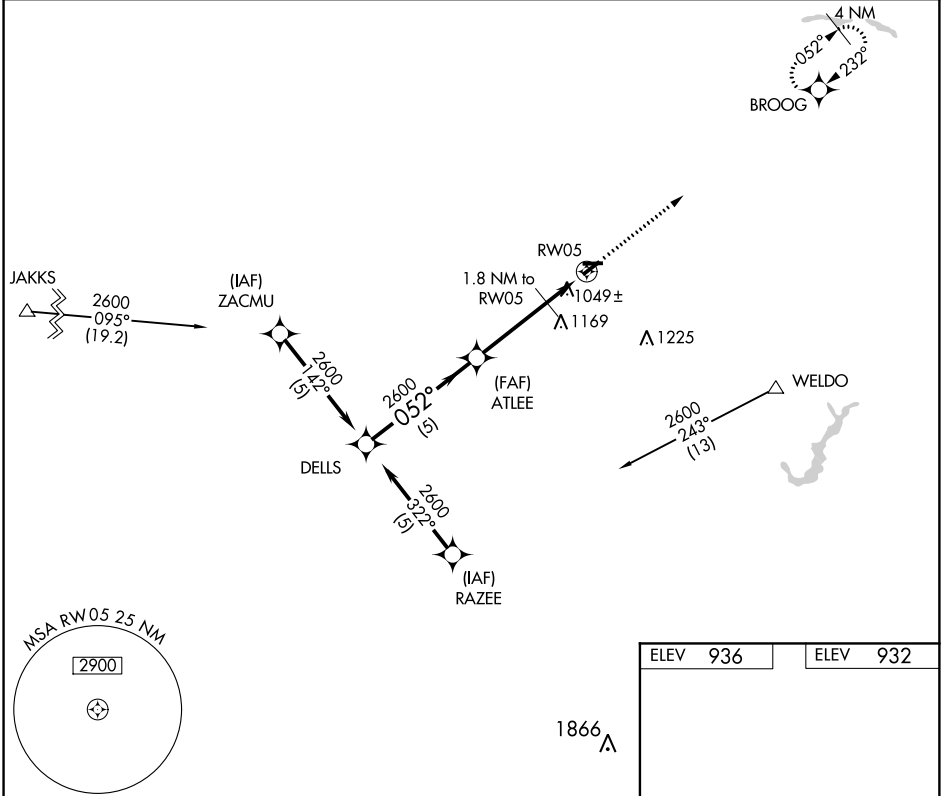
# GPS RWY 5

SHERIDAN (5I4)

**▲ NA** Use Indianapolis Intl altimeter setting. Procedure not authorized at night except by prior arrangement for runway lights.

MISSED APPROACH: Climb to 2600 direct BROOG WP and hold.

INDIANAPOLIS ASOS <b>134.25</b>	INDIANAPOLIS APP CON <b>124.65 317.8</b>	UNICOM <b>123.075 (CTAF) 0</b>
------------------------------------	---	-----------------------------------



CATEGORY	A	B	C	D
S-5	1400-1	468 (500-1)	1400-1¼ 468 (500-1¼)	NA
CIRCLING	1460-1 524 (600-1)	1480-1 544 (600-1)	1480-1½ 544 (600-1½)	NA

LIRL Rwy 5-23 **0**\*

EC-2, 21 JUN 2018 to 19 JUL 2018

EC-2, 21 JUN 2018 to 19 JUL 2018