

WAAS CH 50319 W27A	APP CRS 271°	Rwy Idg TDZE Apt Elev	6002 13 13
--	------------------------	-----------------------------	---------------------------------------

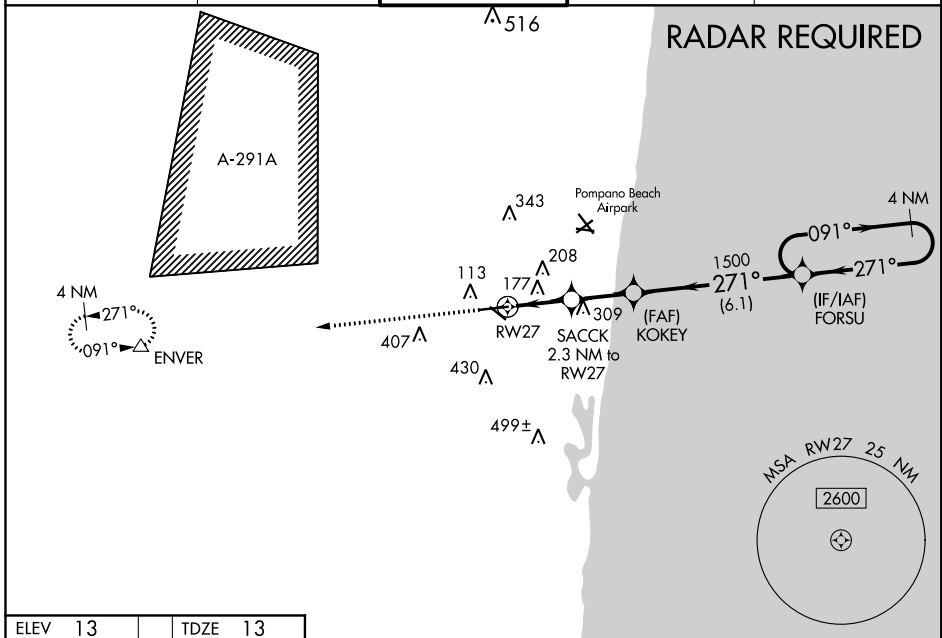
RNAV (GPS) RWY 27

FORT LAUDERDALE EXECUTIVE (F^XE)

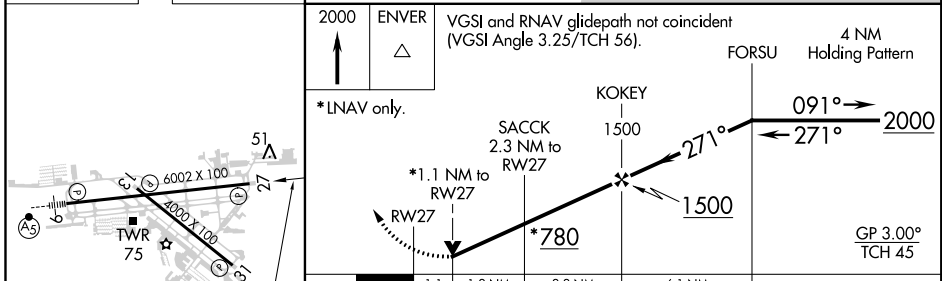
▼ For uncompensated Baro-VNAV systems, LNAV/VNAV NA below 4°C (40°F) or above 54°C (130°F).
▲ DME/DME RNP-0.3 NA. When local altimeter setting not received, use Fort Lauderdale/Hollywood Intl altimeter setting and increase LPV DA to 414; LNAV/VNAV DA to 468. Increase all MDA 20 feet and increase LPV all Cats and LNAV Cats C/D visibility to 1 $\frac{3}{8}$. Baro-VNAV and VDP NA when using Fort Lauderdale/Hollywood Intl altimeter setting. Helicopter visibility reduction below $\frac{3}{4}$ SM NA.

MISSED APPROACH: Climb to 2000 direct ENVER and hold.

ATIS 119.85	MIAMI APP CON 119.7 306.3	EXECUTIVE TOWER 120.9 239.3	GND CON 121.75	CLNC DEL 127.95
-----------------------	-------------------------------------	---------------------------------------	--------------------------	---------------------------



ELEV 13	TDZE 13
---------	---------



CATEGORY	A	B	C	D
LPV DA		396-1 $\frac{1}{4}$	383 (400-1 $\frac{1}{4}$)	
LNAV/VNAV DA		450-1 $\frac{1}{2}$	437 (500-1 $\frac{1}{2}$)	
LNAV MDA	440-1	427 (500-1)	440-1 $\frac{1}{4}$	427 (500-1 $\frac{1}{4}$)
C CIRCLING	520-1 507 (600-1)	620-1 607 (700-1)	780-2 $\frac{1}{4}$ 767 (800-2 $\frac{1}{4}$)	780-2 $\frac{1}{2}$ 767 (800-2 $\frac{1}{2}$)

HIRL Rwy 9-27
MIRL Rwy 13-31
REIL Rws 13, 27 and 31

SE-3, 21 JUN 2018 to 19 JUL 2018

SE-3, 21 JUN 2018 to 19 JUL 2018