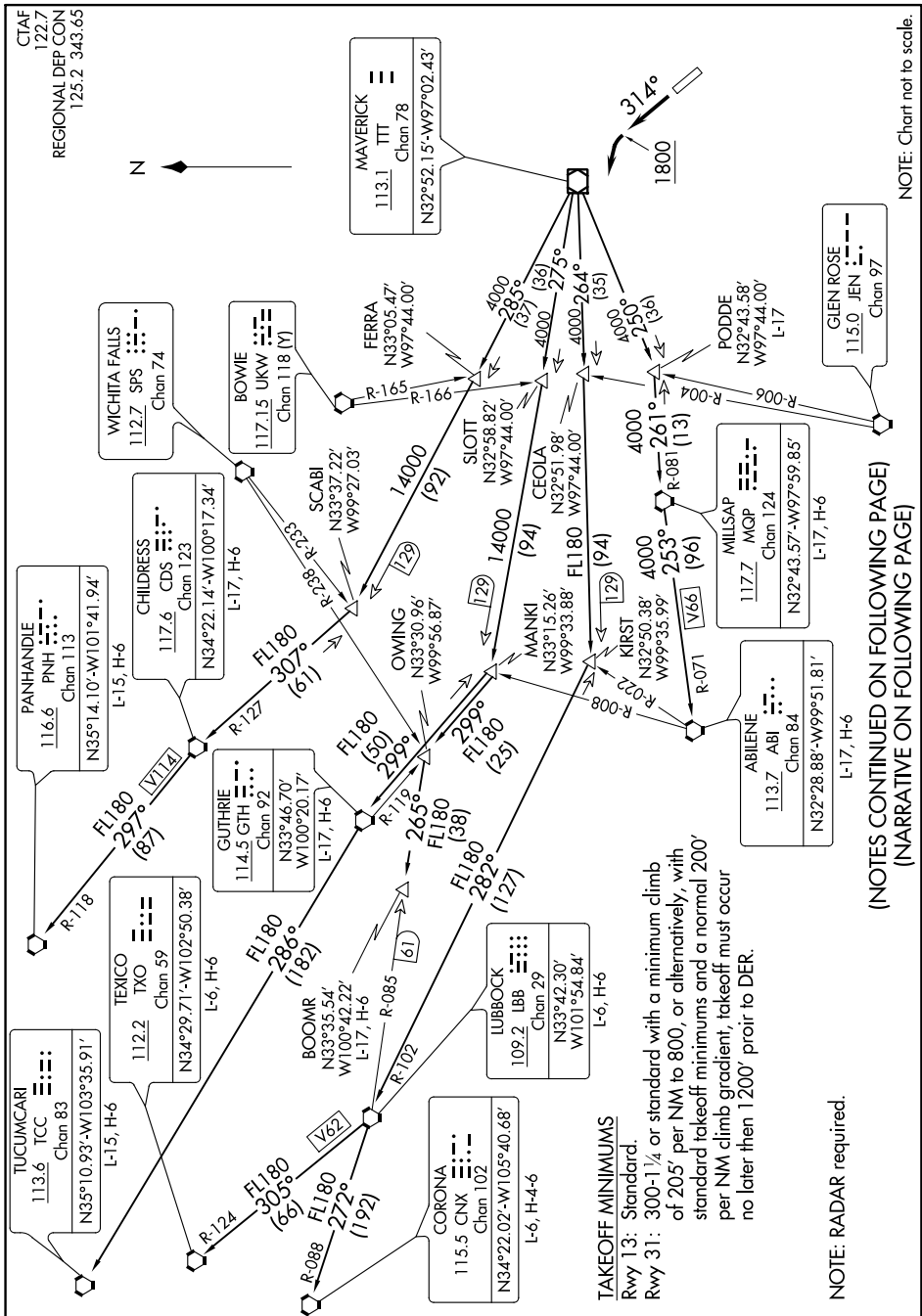


# WORTH ONE DEPARTURE

SC-2, 21 JUN 2018 to 19 JUL 2018



NOTE: Chart not to scale.

(NOTES CONTINUED ON FOLLOWING PAGE)  
(NARRATIVE ON FOLLOWING PAGE)

SC-2, 21 JUN 2018 to 19 JUL 2018

# WORTH ONE DEPARTURE

**TAKEOFF MINIMUMS**  
 Rwy 13: Standard.  
 Rwy 31: 300-1/4 or standard with a minimum climb of 205' per NM to 800, or alternatively, with standard takeoff minimums and a normal 200' per NM climb gradient, takeoff must occur no later than 1200' prior to DER.

NOTE: RADAR required.