

JOE POOL NINE DEPARTURE


TAKEOFF MINIMUMS


Rwy 13: Standard.


Rwy 31: 300-1/4 or standard with a minimum climb of 205' per NM to 800, or alternatively, with standard takeoff minimums and a normal 200' per NM climb gradient, takeoff must occur no later than 1200' prior to DER.

REGIONAL DEP CON
125.2 343.65
CTAF
122.7


**TOP ALTITUDE:
ASSIGNED BY ATC**


MAVERICK
113.1 TTT 
Chan 78
N32°52.15'
W97°02.43'

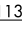
GLEN ROSE
115.0 JEN 
Chan 97

WACO
115.3 ACT 
Chan 100
N31°39.74'
W97°16.14'
L-19, H-6

HOARY
N30°34.63'
W97°46.52'
L-19-21, H-7

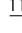
CENTEX
112.8 CWK 
Chan 75

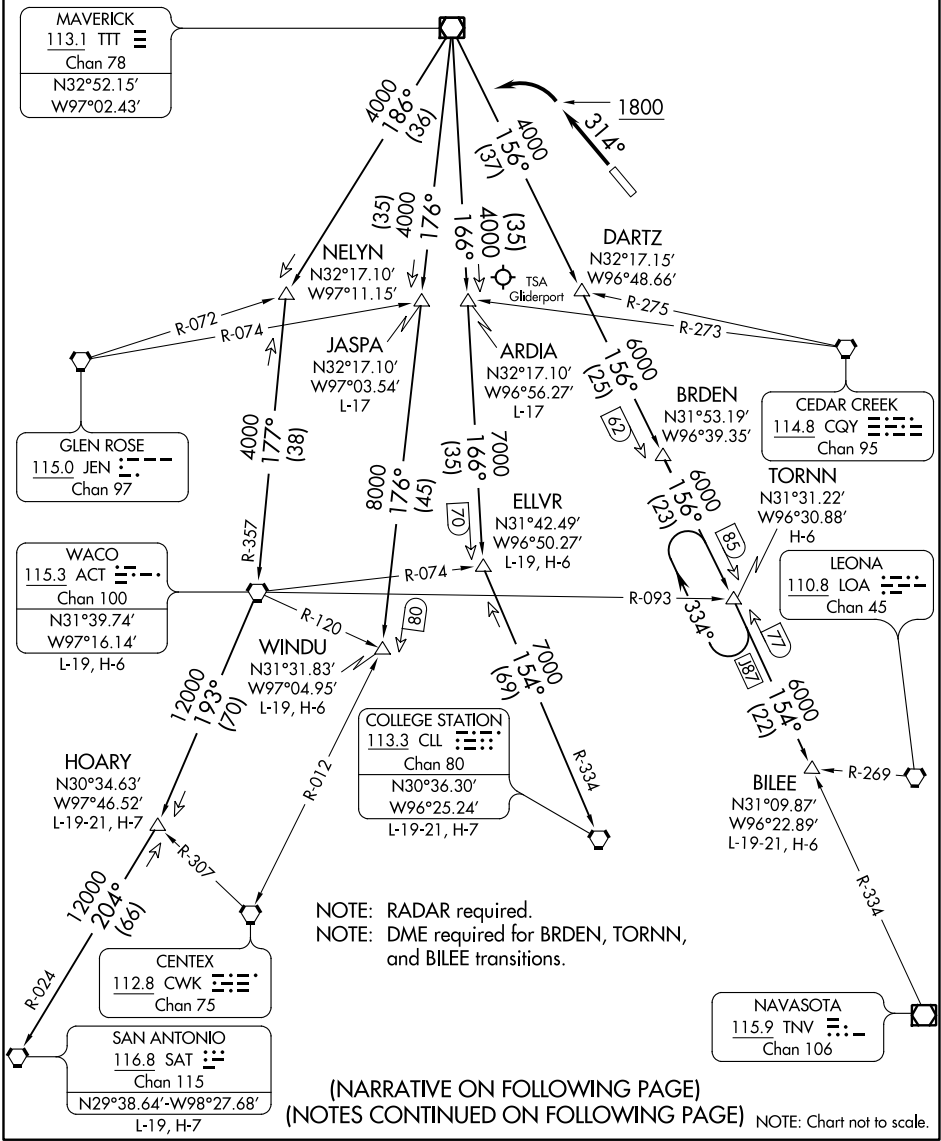
SAN ANTONIO
116.8 SAT 
Chan 115
N29°38.64'-W98°27.68'
L-19, H-7

COLLEGE STATION
113.3 CLL 
Chan 80
N30°36.30'
W96°25.24'
L-19-21, H-7

NOTE: RADAR required.
NOTE: DME required for BRDEN, TORNN,
and BILEE transitions.

(NARRATIVE ON FOLLOWING PAGE)
(NOTES CONTINUED ON FOLLOWING PAGE) NOTE: Chart not to scale.

NAVASOTA
115.9 TNV 
Chan 106



SC-2, 21 JUN 2018 to 19 JUL 2018

SC-2, 21 JUN 2018 to 19 JUL 2018

JOE POOL NINE DEPARTURE