

WAAS CH <b>58236</b> <b>W10A</b>	APP CRS <b>102°</b>	Rwy Idg <b>5350</b> TDZE <b>28</b> Apt Elev <b>28</b>
--	------------------------	---

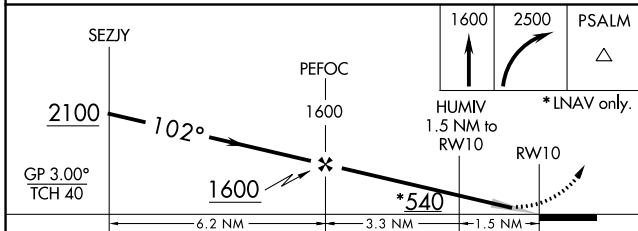
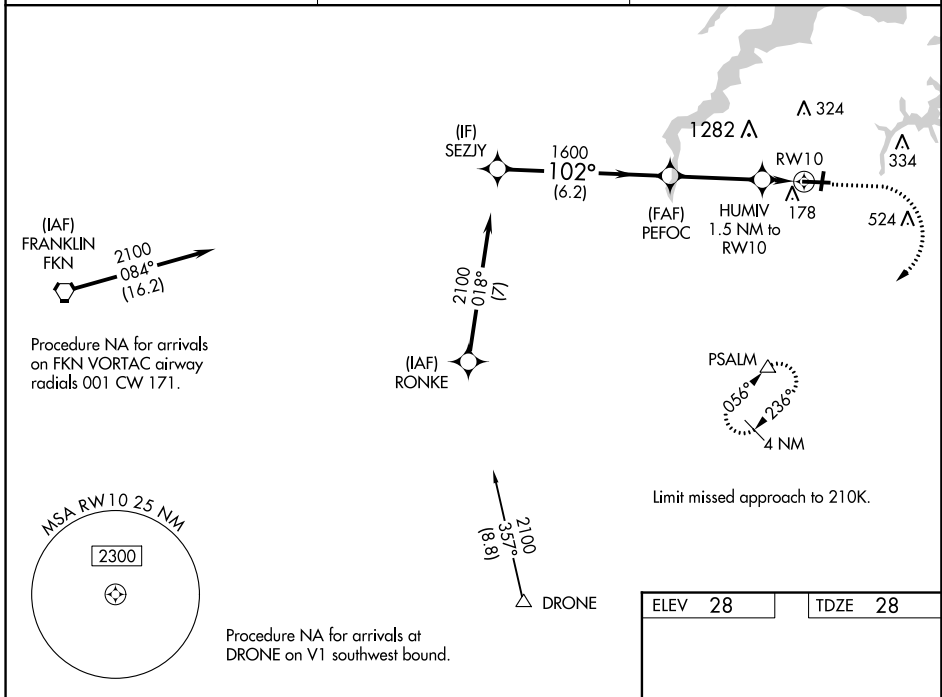
# RNAV (GPS) RWY 10

HAMPTON ROADS EXECUTIVE (PVG)

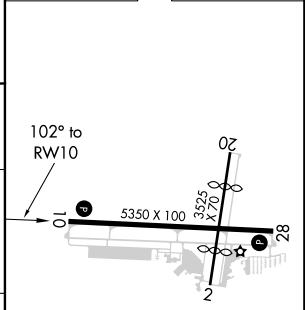
**⚠** Baro-VNAV NA when using Norfolk Intl altimeter setting. For uncompensated Baro-VNAV systems, LNAV/VNAV NA below -15°C (5°F) or above 54°C (130°F).  
**⚠** DME/DME RNP-0.3 NA. When local altimeter setting not received, use Norfolk Intl altimeter setting and increase all DA 33 feet and all MDA 40 feet; increase LNAV/VNAV all Cats visibility and LNAV Cat C visibility 1/8 mile. Circling NA for Cat C N of Rwy 10-28. Circling NA to Rwy 2 and 20. Helicopter visibility reduction below 1 SM NA.

**MISSED APPROACH:**  
 Climb to 1600 then climbing right turn to 2500 direct PSALM and hold.

AWOS-3PT <b>118.375</b>	NORFOLK APP CON <b>118.9 353.7</b>	UNICOM <b>122.725 (CTAF) 0</b>
----------------------------	---------------------------------------	-----------------------------------



ELEV <b>28</b>	TDZE <b>28</b>
----------------	----------------



CATEGORY	A	B	C	D
LPV DA	228-1	200 (200-1)		NA
LNAV/VNAV DA	432-1 <sup>3</sup> / <sub>8</sub>	404 (500-1 <sup>3</sup> / <sub>8</sub> )		NA
LNAV MDA	420-1	392 (400-1)	420-1 <sup>1</sup> / <sub>8</sub> 392 (400-1 <sup>1</sup> / <sub>8</sub> )	NA
CIRCLING	500-1	472 (500-1)	780-2 <sup>1</sup> / <sub>4</sub> 752 (800-2 <sup>1</sup> / <sub>4</sub> )	NA

HIRL Rwy 10-28 **0**  
 REIL Rwy 10 and 28 **0**  
 MIRL Rwy 2-20 **0**

NE-3, 21 JUN 2018 to 19 JUL 2018

NE-3, 21 JUN 2018 to 19 JUL 2018