

VOR/DME COU 110.2 Chan 39	APP CRS 199°	Rwy Idg TDZE Apt Elev	6501 889 889
---	------------------------	-----------------------------	---

VOR Z RWY 20

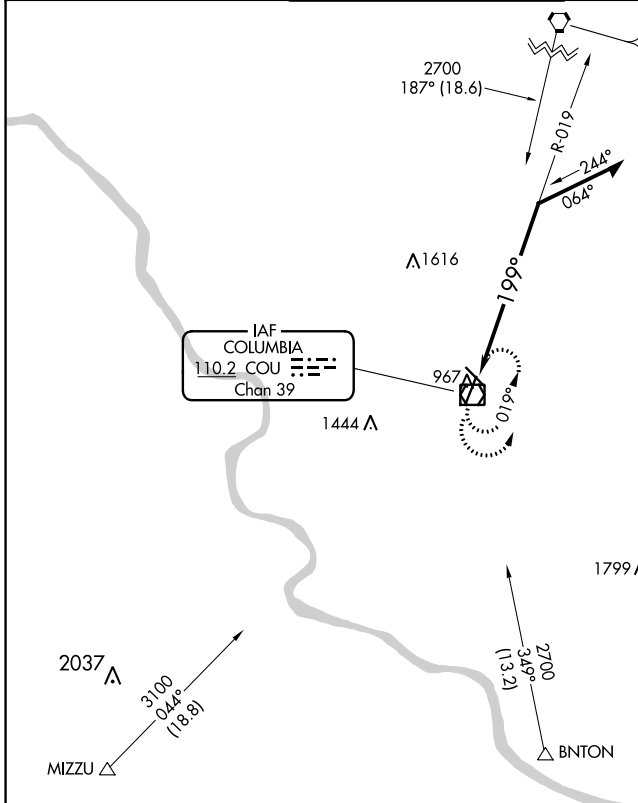
COLUMBIA RGNL (COU)

▼ Inop table does not apply to S-20 Cats C/D. Circling NA for Cat D west of Rwy 2 and 13.

ODALS

MISSED APPROACH: Climbing left turn to 2800 in COU VOR/DME holding pattern.

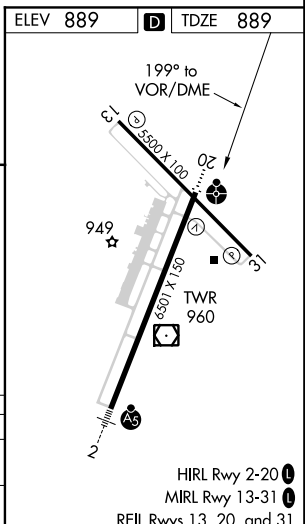
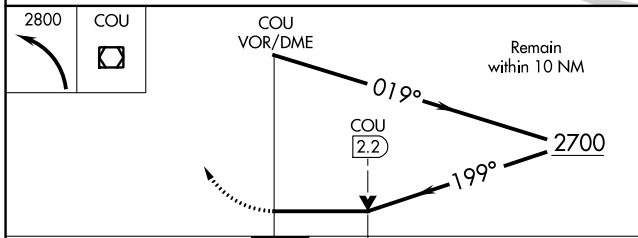
ATIS 128.45	MIZZU APP CON 124.375 353.7	COLUMBIA TOWER * 119.3 (CTAF) 363.25	COLUMBIA RADIO 121.5 243.0 255.4	GND CON 121.6
-----------------------	---------------------------------------	---	---	--------------------------------



HALLSVILLE
114.2 HLV
Chan 89

Procedure NA for arrivals at HLV VORTAC on V175 northbound.

MSA COU 25 NM
3100



CATEGORY	A	B	C	D
S-20	1400-3/4	511 (600-3/4)	1400-1 3/8	511 (600-1 3/8)
C CIRCLING	1400-1	511 (600-1)	1400-1 1/2	1440-2 551 (600-2)

NC-3, 21 JUN 2018 to 19 JUL 2018

NC-3, 21 JUN 2018 to 19 JUL 2018