

WAAS CH <b>40042</b> <b>W13A</b>	APP CRS <b>135°</b>	Rwy Idg TDZE Apt Elev	<b>5500</b> <b>889</b> <b>889</b>
--	------------------------	-----------------------------	---

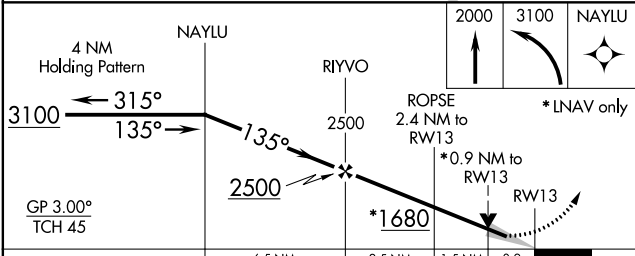
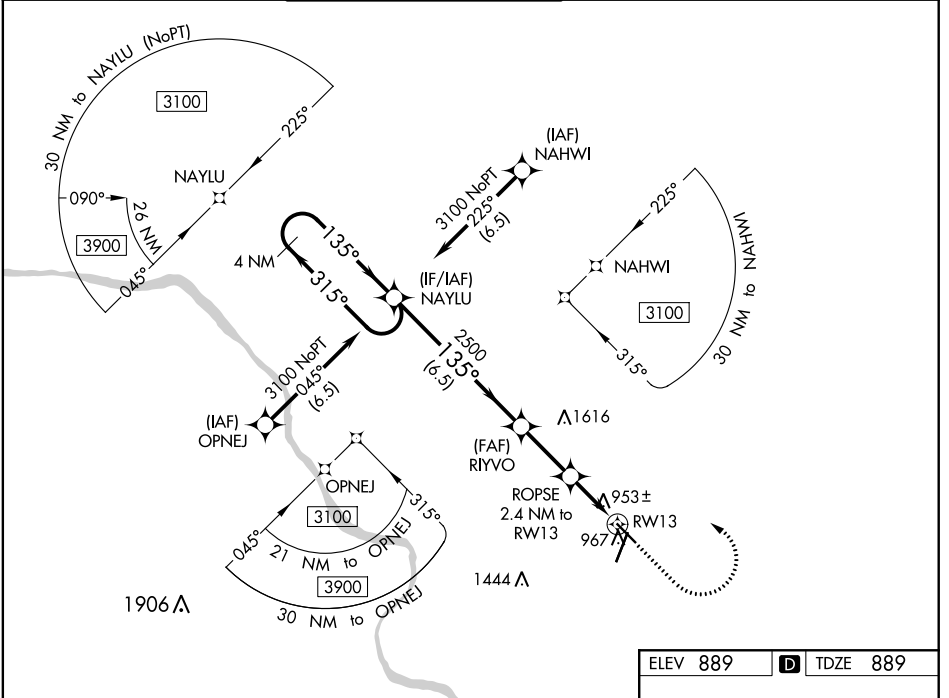
# RNAV (GPS) RWY 13

COLUMBIA RGNL (COU)

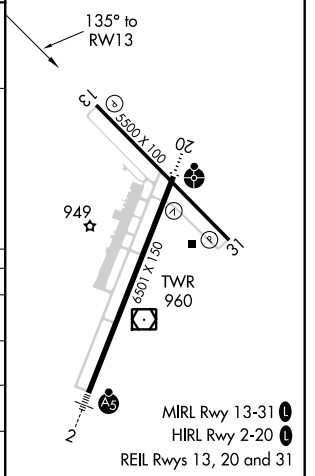
**▽** For uncompensated Baro-VNAV systems, LNAV/VNAV NA below -17°C (2°F) or above 54°C (130°F). Circling NA for Cat D west of Rwy 2 and 13.  
DME/DME RNP-0.3 NA.

MISSED APPROACH: Climb to 2000 then climbing left turn to 3100 direct NAYLU and hold.

ATIS <b>128.45</b>	MIZZU APP CON <b>124.375 353.7</b>	COLUMBIA TOWER* <b>119.3 (CTAF) 0 363.25</b>	COLUMBIA RADIO <b>121.5 243.0 255.4</b>	GND CON <b>121.6</b>
-----------------------	---------------------------------------	---	--	-------------------------



ELEV 889	<b>D</b> TDZE 889
----------	-------------------



CATEGORY	A	B	C	D
LPV DA		1139-1	250 (300-1)	
LNAV/VNAV DA		1139-1	250 (300-1)	
LNAV MDA		1220-1	331 (400-1)	
<b>C</b> CIRCLING	1300-1 411 (500-1)	1340-1 451 (500-1)	1340-1½ 451 (500-1½)	1440-2 551 (600-2)

NC-3, 21 JUN 2018 to 19 JUL 2018

NC-3, 21 JUN 2018 to 19 JUL 2018