

HENDERSON, KENTUCKY

AL-5059 (FAA)

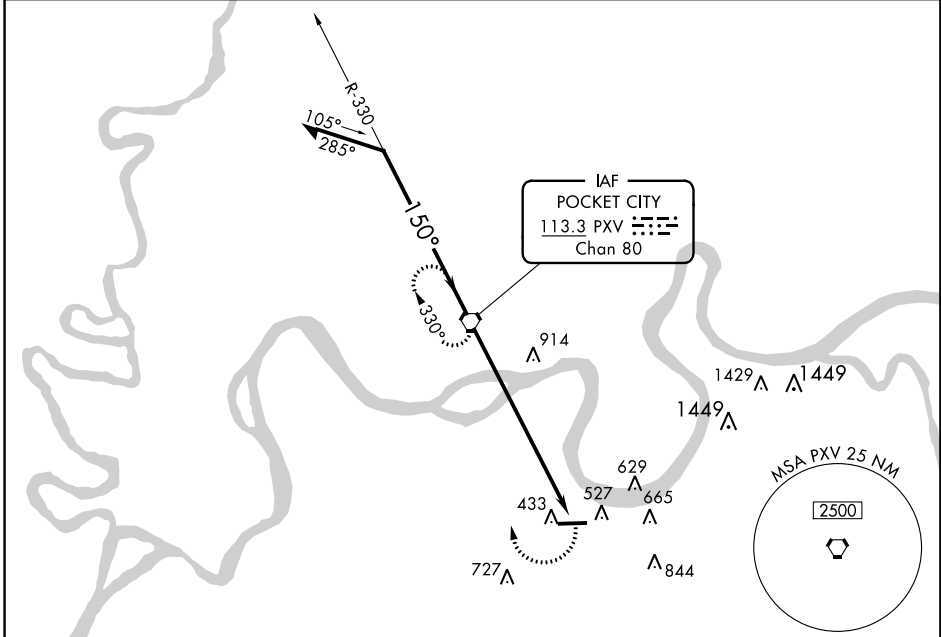
17173

VORTAC PXV 113.3 Chan 80	APP CRS 150°	Rwy Idg TDZE Apt Elev	N/A N/A 386
--	------------------------	-----------------------------	--

VOR-A
HENDERSON CITY-COUNTY (EHR)

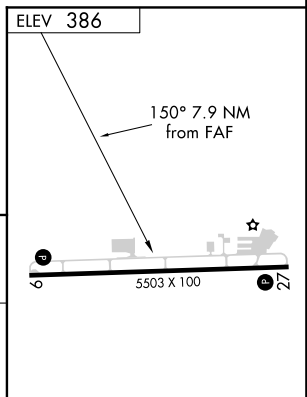
▲ NA If local altimeter setting not received, use Evansville altimeter setting and increase all MDA's 80 feet. MISSED APPROACH: Climbing right turn to 2100 direct PXV VORTAC and hold.

AWOS-3PT 118.85	EVANSVILLE APP CON ★ 124.025 257.8	UNICOM 122.8 (CTAF) 0
---------------------------	--	--



SE-1, 21 JUN 2018 to 19 JUL 2018

SE-1, 21 JUN 2018 to 19 JUL 2018



	2100	330°	PXV VORTAC	2100	150°	2100	7.9 NM
--	------	------	------------	------	------	------	--------

CATEGORY	A	B	C	D	FAF to MAP 7.9 NM					
CIRCLING	920-1	534 (600-1)	920-1½ 534 (600-1½)	940-2 554 (600-2)	Knots	60	90	120	150	180
					Min:Sec	7:54	5:16	3:57	3:10	2:38

HENDERSON, KENTUCKY
Amdt 10 23JAN03

37°48'N-87°41'W

HENDERSON CITY-COUNTY (EHR)
VOR-A