

WAAS CH 97709 W09A	APP CRS 089°	Rwy Idg TDZE Apt Elev	5503 385 387
--	------------------------	-----------------------------	---

RNAV (GPS) RWY 9

HENDERSON CITY-COUNTY (E.H.R.)

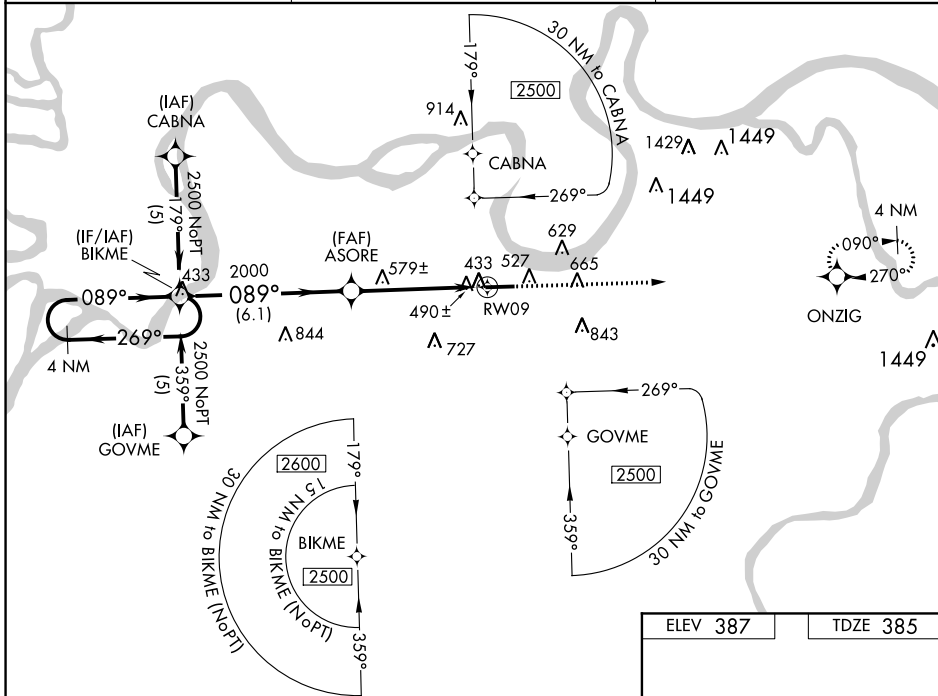
⚠ DME/DME RNP-0.3 NA. For uncompensated Baro-VNAV systems, LNAV/VNAV NA below -15°C (5°F) or above 48°C (118°F). Visibility reduction by helicopters NA. Baro-VNAV and VDP NA when using Evansville altimeter setting. When local altimeter setting not received, use Evansville altimeter setting and increase all DA 41 feet and all MDA 60 feet and LPV all Cats, LNAV/VNAV all Cats and LNAV Cats C/D visibilities ¼ mile.

MISSED APPROACH:
Climb to 2500 direct ONZIG and hold.

AWOS-3PT
118.85

EVANSVILLE APP CON ★
124.025 257.8

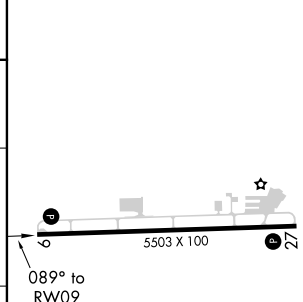
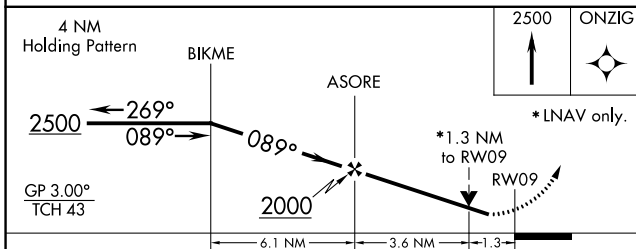
UNICOM
122.8 (CTAF) 0



SE-1, 21 JUN 2018 to 19 JUL 2018

SE-1, 21 JUN 2018 to 19 JUL 2018

ELEV 387	TDZE 385
----------	----------



CATEGORY	A	B	C	D
LPV DA	694-1 309 (400-1)			
LNAV/VNAV DA	774-1¼ 389 (400-1¼)			
LNAV MDA	840-1 455 (500-1)	840-1¼ 455 (500-1¼)	840-1½ 455 (500-1½)	
CIRCLING	880-1 493 (500-1)	880-1½ 493 (500-1½)	940-2 553 (600-2)	

REIL Rwys 9 and 27 0
MIRL Rwy 9-27 0