

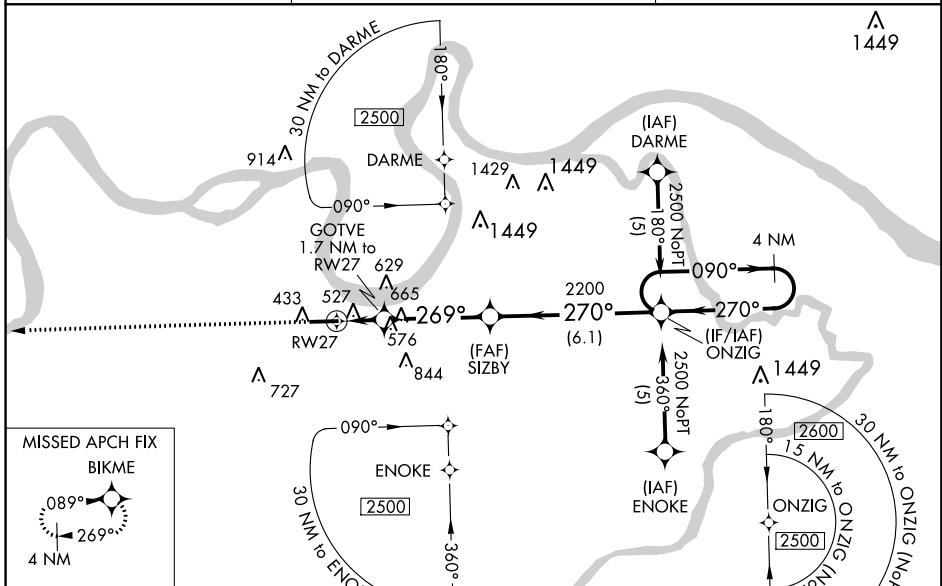
WAAS CH 77909 W27A	APP CRS 269°	Rwy Idg TDZE Apt Elev	5503 387 387
--	------------------------	-----------------------------	---

RNAV (GPS) RWY 27
HENDERSON CITY-COUNTY (E.H.R.)

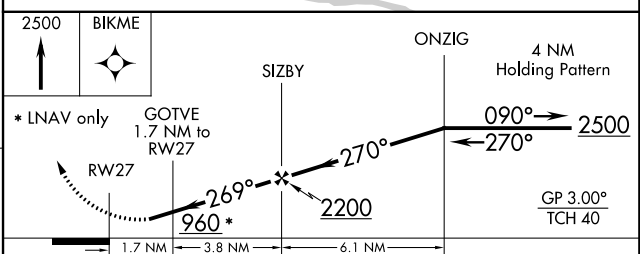
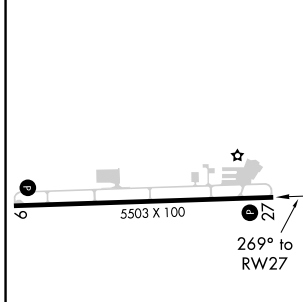
⚠ Baro-VNAV NA when using Evansville altimeter setting. For uncompensated Baro-VNAV systems, LNAV/VNAV NA below -15°C (5°F) or above 48°C (118°F). DME/DME RNP-0.3 NA. Visibility reduction by helicopters NA. When local altimeter setting not received, use Evansville altimeter setting and increase all DA 41 feet and all MDA 60 feet and LPV all Cats, LNAV/VNAV all Cats and LNAV Cats C/D visibilities ¼ mile.

⚠ MISSED APPROACH: Climb to 2500 direct BIKME and hold.

AWOS-3PT 118.85	EVANSVILLE APP CON * 124.025 257.8	UNICOM 122.8 (CTAF) 0
---------------------------	--	--



ELEV 387	TDZE 387
----------	----------



CATEGORY	A	B	C	D
LPV DA		733-1¼	346 (400-1¼)	
LNAV/VNAV DA		827-1½	440 (500-1½)	
LNAV MDA	840-1	453 (500-1)	840-1¼ 453 (500-1¼)	840-1½ 453 (500-1½)
CIRCLING	880-1	493 (500-1)	880-1½ 493 (500-1½)	940-2 553 (600-2)

REIL Rwy 9 and 27 **0**
MIRL Rwy 9-27 **0**

SE-1, 21 JUN 2018 to 19 JUL 2018

SE-1, 21 JUN 2018 to 19 JUL 2018