

WAAS CH 61099 W36A	APP CRS 356°	Rwy Idg TDZE 1307 Apt Elev 1324
----------------------------------------	------------------------	-----------------------------------------------------

RNAV (GPS) RWY 36

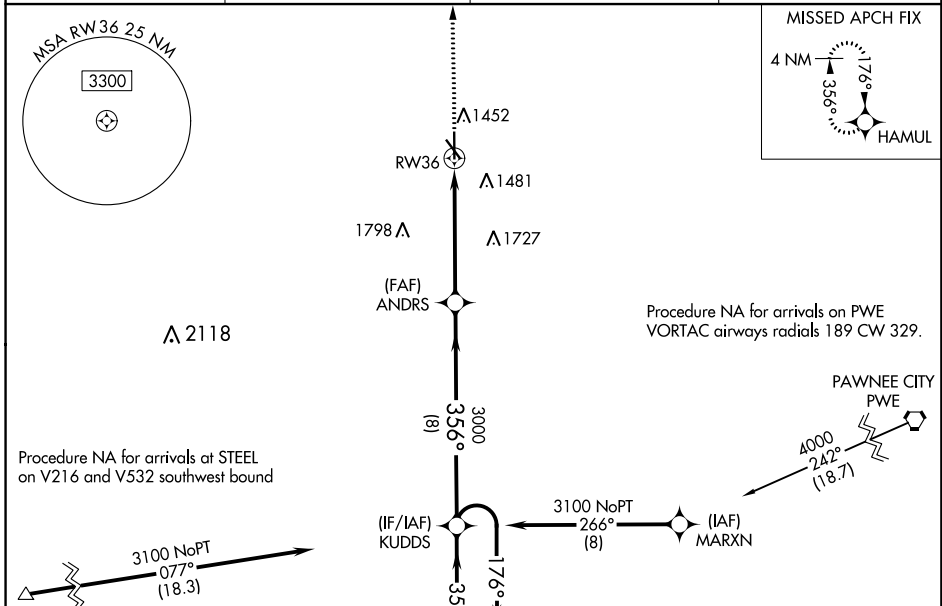
BEATRICE MUNI (BIE)

⚠ Inoperative table does not apply to LPV all Cats. For uncompensated Baro-VNAV systems, LNAV/VNAV NA below -22°C (-7°F) or above 54°C (130°F). For inoperative MALS, increase LNAV/VNAV all Cats visibility to 1/2 mile and LNAV Cat A/B visibility to 1. DME/DME RNP-0.3 NA.

MALS

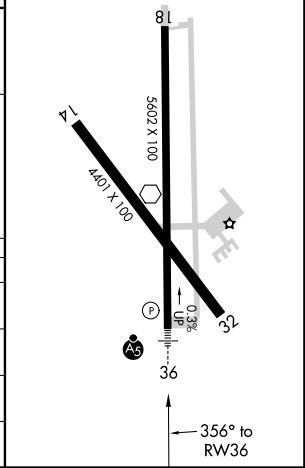
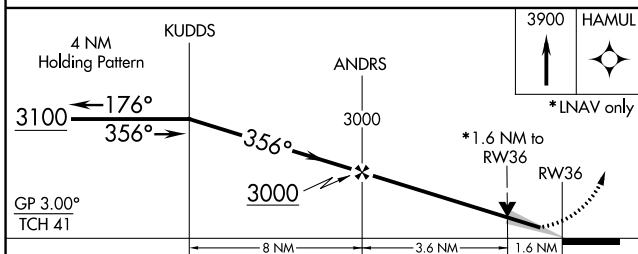
MISSED APPROACH: Climb to 3900 direct HAMUL and hold.

AWOS-3 125.325	MINNEAPOLIS CENTER 126.4 317.7	COLUMBUS RADIO 122.5	UNICOM 122.8 (CTAF)
--------------------------	------------------------------------------	--------------------------------	-------------------------------



ELEV 1324	D TDZE 1307
-----------	--------------------

MIRL Rwy's 14-32 and 18-36



CATEGORY	A	B	C	D
LPV DA		1507-3/4	200 (200-3/4)	
LNAV/VNAV DA		1559-3/4	252 (300-3/4)	
LNAV MDA	1840-3/4	533 (600-3/4)	1840-1	533 (600-1)
C CIRCLING	1840-1	516 (600-1)	2000-2 676 (700-2)	2100-2 1/2 776 (800-2 1/2)

NC-2, 21 JUN 2018 to 19 JUL 2018

NC-2, 21 JUN 2018 to 19 JUL 2018