

LONGVIEW, TEXAS

AL-807 (FAA)

17117

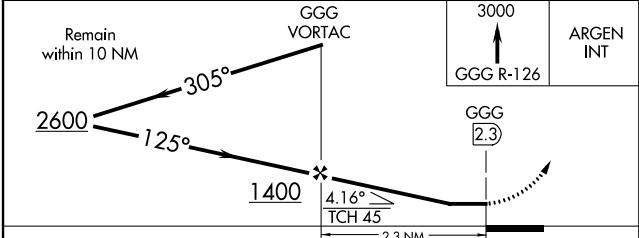
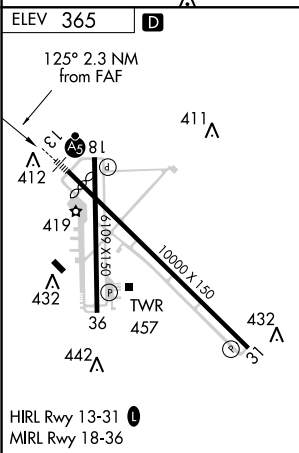
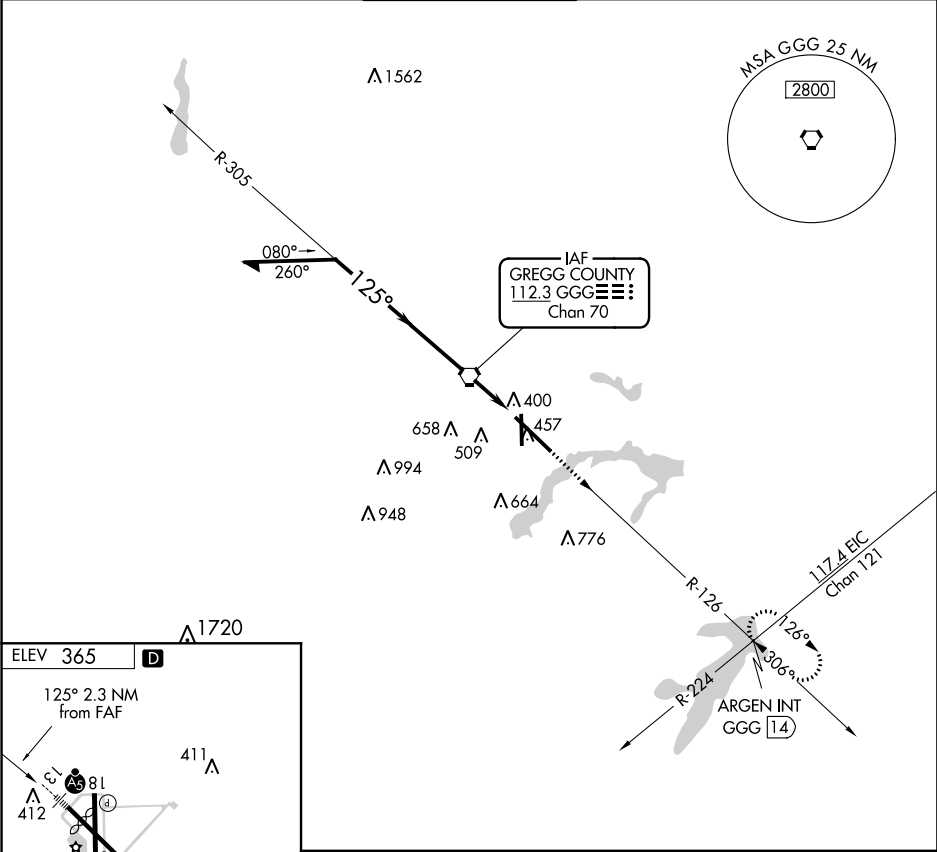
VORTAC GGG 112.3 Chan 70	APP CRS 125°	Rwy Idg TDZE Apt Elev	N/A N/A 365
---------------------------------------	------------------------	-----------------------------	--

VOR-A
EAST TEXAS RGNL (GGG)

▼ When local altimeter setting not received, use Gilmer altimeter setting and increase all MDA 60 feet.

MISSED APPROACH: Climb to 3000 via GGG VORTAC R-126 to ARGEN Int/GGG 14 DME and hold.

ATIS 119.65	LONGVIEW APP CON* 124.275 257.975	EASTEX TOWER* 119.2 (CTAF) 377.05	GND CON 121.6	UNICOM 122.95
-----------------------	---	---	-------------------------	-------------------------



FAF to MAP 2.3 NM						
Knots	60	90	120	150	180	
Min:Sec	2:18	1:32	1:09	0:55	0:46	
CATEGORY	A		B		C	D
CIRCLING	860-1		495 (500-1)		860-1½ 495 (500-1½)	920-2 555 (600-2)

LONGVIEW, TEXAS
Orig-A 14JAN10

32°23'N-94°43'W

EAST TEXAS RGNL (GGG)
VOR-A

SC-2, 21 JUN 2018 to 19 JUL 2018

SC-2, 21 JUN 2018 to 19 JUL 2018