

WAAS CH 53504 W31A	APP CRS 311°	Rwy Idg TDZE 354 Apt Elev 365	9200
--	------------------------	---	-------------

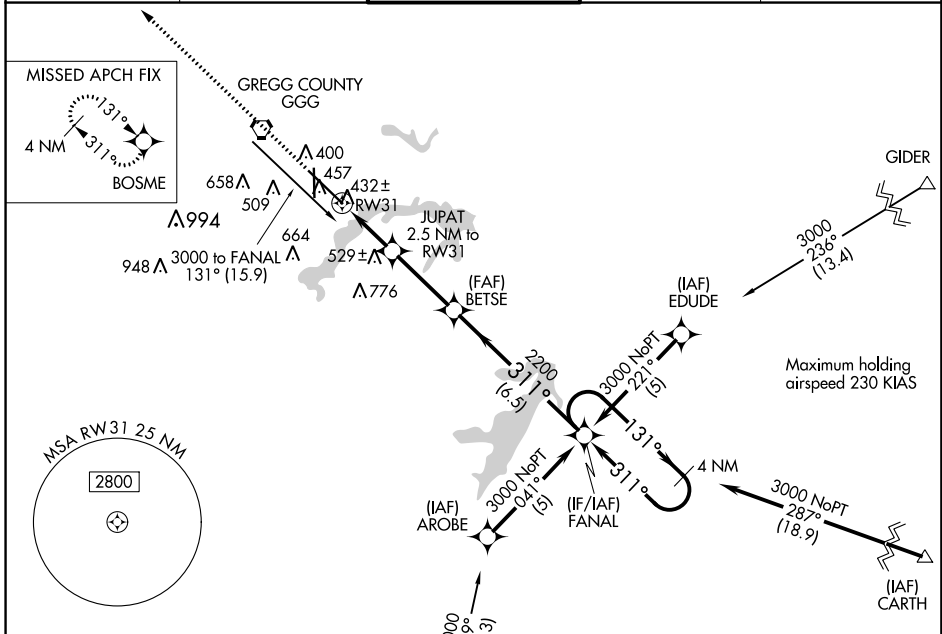
RNAV (GPS) RWY 31

EAST TEXAS RGNL (GGG)

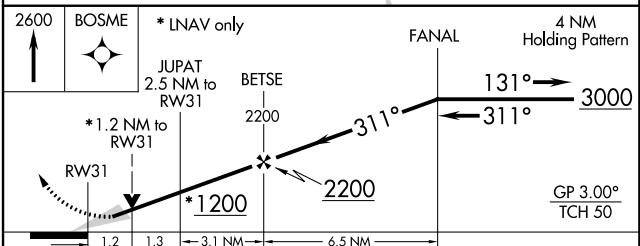
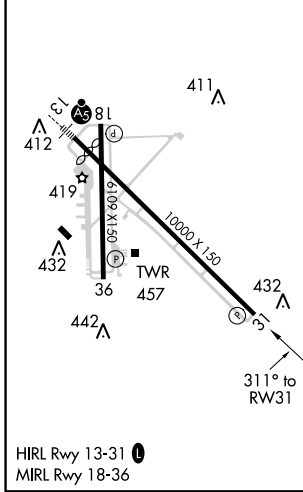
▼ Baro-VNAV NA when using Gilmer altimeter setting. For uncompensated Baro-VNAV systems, LNAV/VNAV NA below -15°C (5°F) or above 48°C (118°F). DME/DME RNP-0.3 NA. VDP NA when using Gilmer altimeter setting. When local altimeter setting not received, use Gilmer altimeter setting and increase all DA 59 feet, all MDA 60 feet and all visibilities ¼ mile.

▲ MISSED APPROACH: Climb to 2600 direct BOSME and hold.

ATIS 119.65	LONGVIEW APP CON* 124.275 257.975	EASTEX TOWER* 119.2 (CTAF) 0377.05	GND CON 121.6	UNICOM 122.95
-----------------------	---	---	-------------------------	-------------------------



ELEV 365	D	TDZE 354
----------	----------	----------



CATEGORY	A	B	C	D	E
LPV DA	604-3/4		250 (300-3/4)		
LNAV/VNAV DA	682-1/4		328 (400-1/4)		
LNAV MDA	800-1	446 (500-1)	800-1/4 446 (500-1/4)	800-1/2	446 (500-1/2)
CIRCLING	860-1	495 (500-1)	860-1/2 495 (500-1/2)	920-2 555 (600-2)	1080-2/2 715 (800-2/2)

SC-2, 21 JUN 2018 to 19 JUL 2018

SC-2, 21 JUN 2018 to 19 JUL 2018