

WAAS CH 99426 W18A	APP CRS 176°	Rwy Idg TDZE 356 Apt Elev 365	6109
--	------------------------	---	-------------

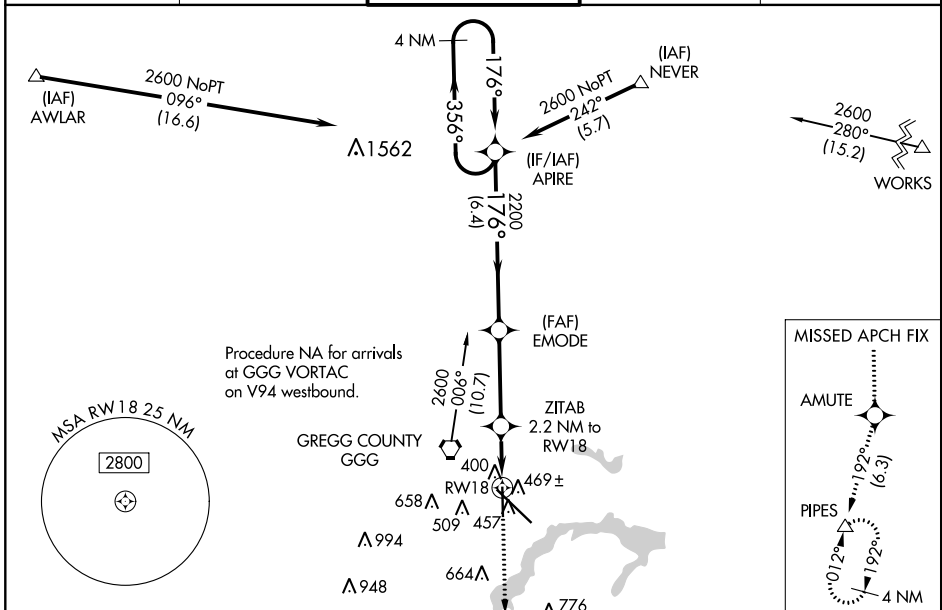
RNAV (GPS) RWY 18

EAST TEXAS RGNL (GGG)

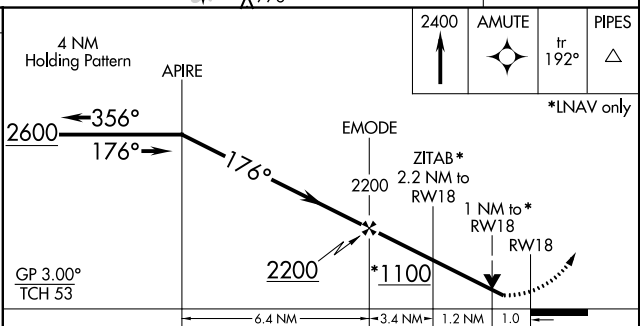
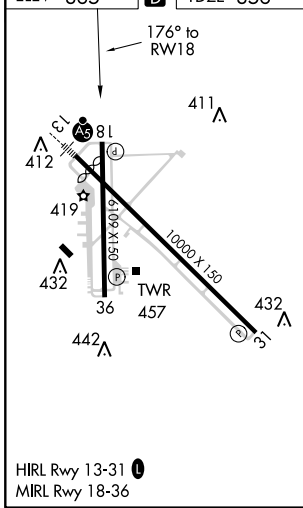
⚠ Baro-VNAV NA when using Gilmer altimeter setting. For uncompensated Baro-VNAV systems, LNAV/VNAV NA below -15°C (5°F) or above 41°C (105°F). DME/DME RNP-0.3 NA. Visibility reduction by helicopters NA. When local altimeter setting not received, use Gilmer altimeter setting and increase all DA 59 feet and all MDA 60 feet, increase LPV visibility all Cats ¼ mile and LNAV/VNAV visibility all Cats ⅓ mile and LNAV visibility Cat C and D ¼ mile.

MISSED APPROACH:
Climb to 2400 direct AMUTE and on track 192° to PIPES and hold.

ATIS 119.65	LONGVIEW APP CON* 124.275 257.975	EASTEX TOWER* 119.2 (CTAF) 0377.05	GND CON 121.6	UNICOM 122.95
-----------------------	---	---	-------------------------	-------------------------



ELEV 365	D	TDZE 356
-----------------	----------	-----------------



CATEGORY	A	B	C	D
LPV DA		630-7/8	274 (300-7/8)	
LNAV/VNAV DA		652-1	296 (300-1)	
LNAV MDA		720-1	364 (400-1)	
CIRCLING	860-1	495 (500-1)	860-1½ 495 (500-1½)	920-2 555 (600-2)

SC-2, 21 JUN 2018 to 19 JUL 2018

SC-2, 21 JUN 2018 to 19 JUL 2018