


WAAS CH 61100 W13A	APP CRS 131°	Rwy Idg 9200 TDZE 358 Apt Elev 365
---------------------------------	------------------------	---

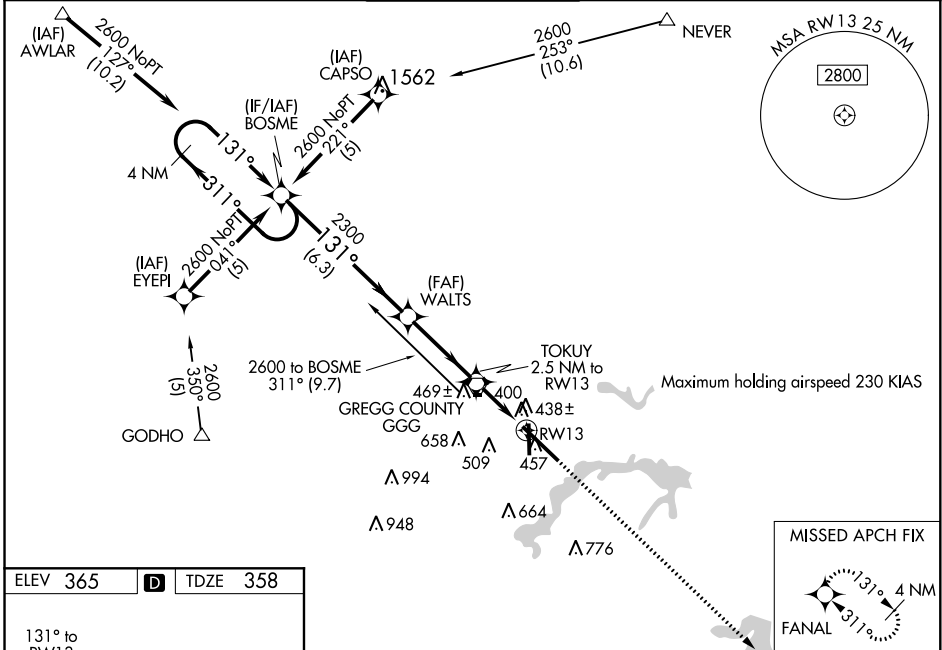
RNAV (GPS) RWY 13

EAST TEXAS RGNL (GGG)

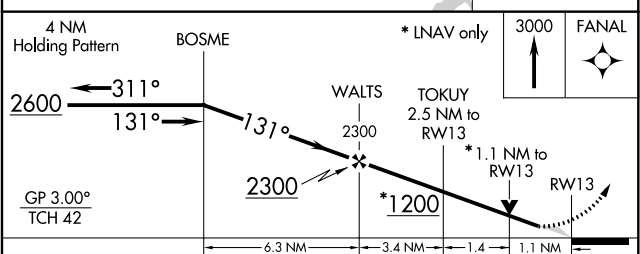
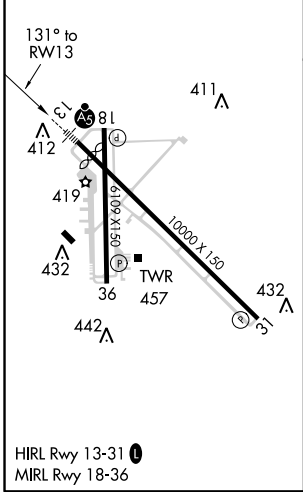
▽ For inoperative MALSR, increase LPV all Cats visibility to RVR 5000, LNAV/VNAV Cat E visibility to RVR 6000, LNAV Cat D visibility to RVR 6000, and LNAV Cat E visibility to 1½. Baro-VNAV NA when using Gilmer altimeter setting. For uncompensated Baro-VNAV systems, LNAV/VNAV NA below -15°C (5°F) or above 48°C (118°F). DME/DME RNP-0.3 NA. VDP NA when using Gilmer altimeter setting. When local altimeter setting not received use Gilmer altimeter setting and increase all DA 59 feet, all MDA 60 feet, increase visibility LNAV/VNAV all Cats, LNAV Cat E and circling Cat E ¼ mile. For inoperative MALSR when using Gilmer altimeter setting, increase LPV all Cats visibility to RVR 5000, LNAV/VNAV Cat E visibility to RVR 6000, and LNAV Cat E visibility to 1½.

MALSR
 MISSED APPROACH:
 Climb to 3000 direct
 FANAL and hold.

ATIS 119.65	LONGVIEW APP CON* 124.275 257.975	EASTEX TOWER* 119.2 (CTAF) 377.05	GND CON 121.6	UNICOM 122.95
-----------------------	---	---	-------------------------	-------------------------



ELEV 365	D	TDZE 358
----------	----------	----------



CATEGORY	A	B	C	D	E
LPV DA	612/24 254 (300-½)				
LNAV/VNAV DA	726/40 368 (400-¾)				
LNAV MDA	760/24	402 (400-½)	760/40 402 (400-¾)	760/50	402 (400-1)
CIRCLING	860-1	495 (500-1)	860-1½ 495 (500-1½)	920-2 555 (600-2)	1080-2½ 715 (800-2½)

SC-2, 21 JUN 2018 to 19 JUL 2018

SC-2, 21 JUN 2018 to 19 JUL 2018