

LOC I-GGG <b>109.5</b>	APP CRS <b>131°</b>	Rwy Idg <b>9200</b>
		TDZE <b>358</b>
		Apt Elev <b>365</b>

# ILS or LOC RWY 13

EAST TEXAS RGNL (GGG)

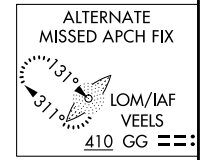
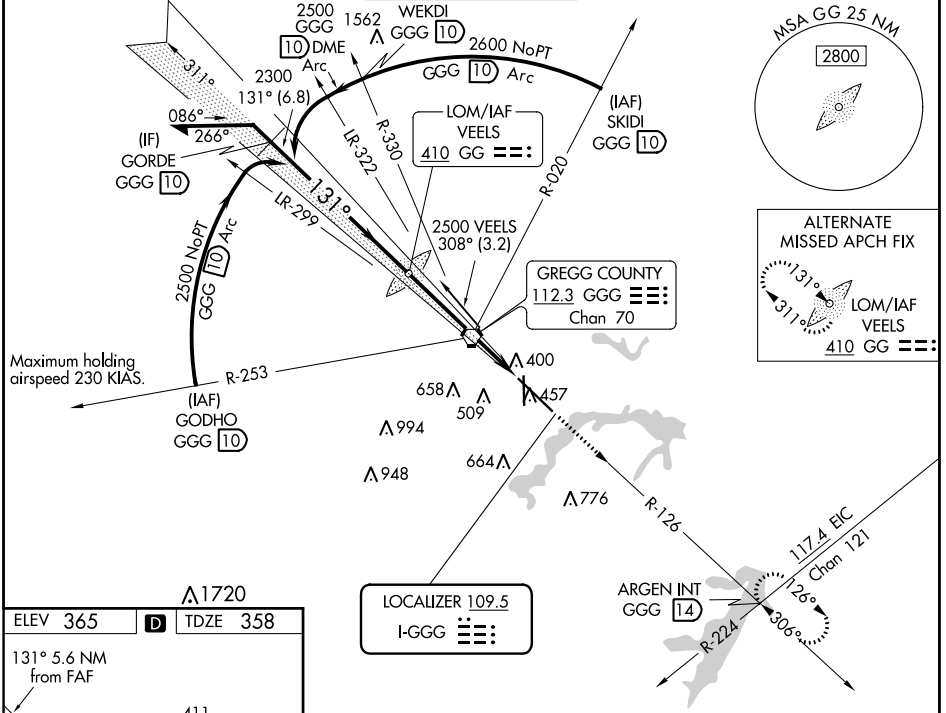
ADF or DME required for procedure entry.

**▼** For inoperative MALSR, increase S-ILS-13 Cat E visibility to RVR 4000, S-LOC-13 Cat E visibility to 1 $\frac{3}{4}$ . When local altimeter setting not received, use Gilmer altimeter setting and increase all DA 59 feet, all MDA 60 feet and visibility S-LOC 13 and circling Cat D, E  $\frac{1}{4}$  mile. For inoperative MALSR when using Gilmer altimeter setting, increase visibility S-ILS 13 all Cats to RVR 5000 and S-LOC 13 Cat E to 2. \* RVR 1800 authorized with the use of FD or AP or HUD to DA (NA when using Gilmer altimeter setting).

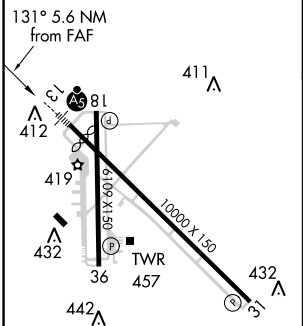


**MISSED APPROACH:**  
Climb to 3000 via GGG VORTAC R-126 to ARGEN Int/GGG 14 DME and hold.

ATIS <b>119.65</b>	LONGVIEW APP CON * <b>124.275 257.975</b>	EASTEX TOWER * <b>119.2 (CTAF) 0377.05</b>	GND CON <b>121.6</b>	UNICOM <b>122.95</b>
-----------------------	--	---	-------------------------	-------------------------

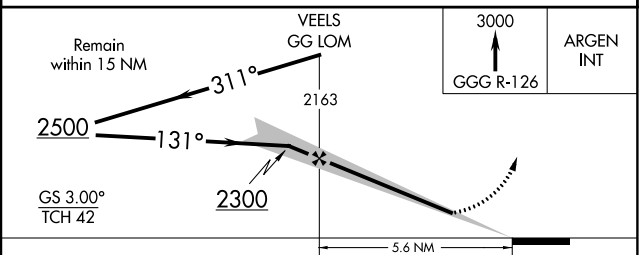


ELEV <b>365</b>	<b>D</b>	TDZE <b>358</b>
-----------------	----------	-----------------



HIRL Rwy 13-31  
MIRL Rwy 18-36

FAF to MAP 5.6 NM					
Knots	60	90	120	150	180
Min:Sec	5:36	3:44	2:48	2:14	1:52



CATEGORY	A	B	C	D	E
S-ILS 13	*558/24 200 (200- $\frac{1}{2}$ )				558/24 200 (200- $\frac{1}{2}$ )
S-LOC 13	860/24	502 (500- $\frac{1}{2}$ )	860/50	502 (500-1)	860/60 502 (500-1 $\frac{1}{4}$ )
CIRCLING	860-1	495 (500-1)	860-1 $\frac{1}{2}$ 495 (500-1 $\frac{1}{2}$ )	920-2 555 (600-2)	1080-2 $\frac{1}{2}$ 715 (800-2 $\frac{1}{2}$ )

SC-2, 21 JUN 2018 to 19 JUL 2018

SC-2, 21 JUN 2018 to 19 JUL 2018