


WAAS CH 48902 W10A	APP CRS 096°	Rwy Idg TDZE Apt Elev	8424 7 65
--	------------------------	-----------------------------	--------------------------------------

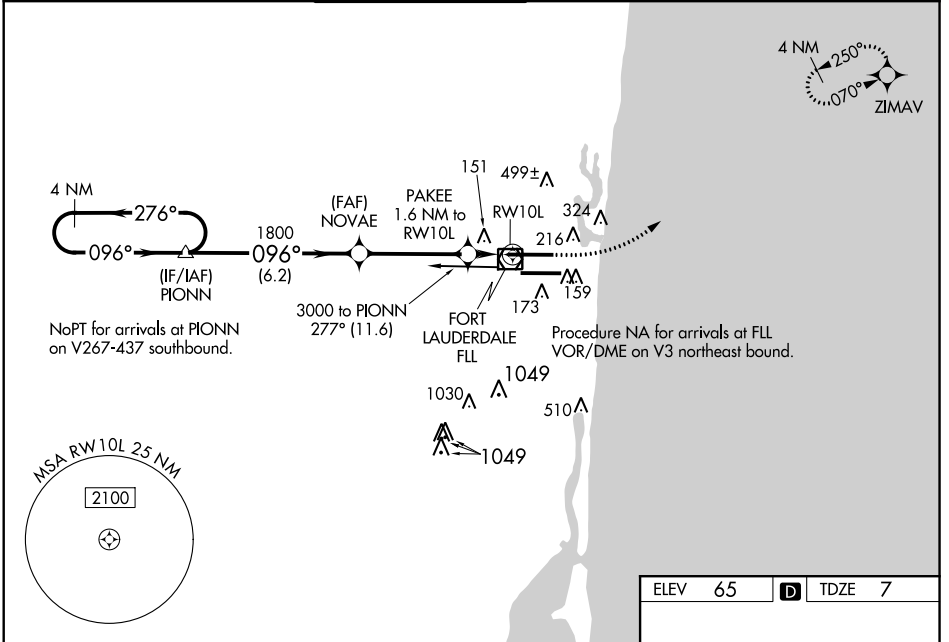
RNAV (GPS) Z RWY 10L

FORT LAUDERDALE/HOLLYWOOD INTL (FLL)

⚠ For uncompensated Baro-VNAV systems, LNAV/VNAV NA below 5°C (40°F) or above 54°C (130°F). DME/DME RNP-0.3 NA. For inop MALSR, increase LNAV Cat A, B visibility to RVR 5500. Helicopter visibility reduction below 4000 RVR NA. Inop table does not apply to LPV all Cats. LNAV procedure NA during simultaneous operations. Use of FD or AP providing RNAV track guidance required during simultaneous operations. Simultaneous approach authorized with Rwy 10R.

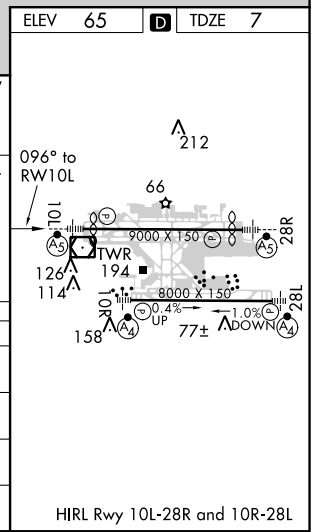
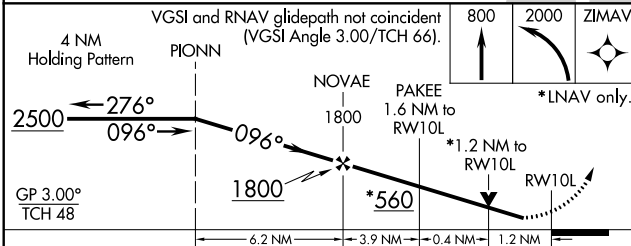
MALSR

MISSED APPROACH: Climb to 800 then climbing left turn to 2000 direct ZIMAV and hold.

D-ATIS 135.0	MIAMI APP CON 133.775 285.6	FORT LAUDERDALE TOWER 119.3 257.8	GND CON 121.4	CLNC DEL 128.4	CPDLC
------------------------	---------------------------------------	--	-------------------------	--------------------------	-------



SE-3, 21 JUN 2018 to 19 JUL 2018

SE-3, 21 JUN 2018 to 19 JUL 2018



CATEGORY	A	B	C	D
LPV DA		257/40	250 (200-¾)	
LNAV/VNAV DA		477/57	470 (500-1¼)	
LNAV MDA	460/40	453 (400-¾)	460/45	453 (400-⅔)
C CIRCLING	540-1 475 (500-1)	600-1 535 (600-1)	760-2 695 (700-2)	760-2¼ 695 (700-2¼)